

Seed Notes

California Crop Improvement Association
Parsons Seed Certification Center
University of California
One Shields Avenue
Davis, CA 95616-8540



November 2013



Phone: 530-752-0544

Fax: 530-752-4735

Email: ccia@ucdavis.edu

Website: ccia.ucdavis.edu

Drawing Application Maps

A new mapping tool is available for applications in the 2014 crop year. This new tool allows the user to select the Pin ID from a list of their company's pins on the Crop Isolation Map. The map associated with the Pin ID will then be imported from the Crop Isolation Map into the seed application. The application number will be added to the Pin ID information within the Crop Isolation Map.

This improvement will be most helpful to sunflower and alfalfa applicants who have been drawing the field twice – once on the Crop Isolation Map and then again in the application to grow certified seed.

This new mapping system will not allow users to cross the drawn line while drawing the boundary of a field. An error message will appear if this occurs.



California Crop Improvement Association will provide services and support research projects that promote the improvement, production, distribution and use of superior quality seeds and other agricultural products.

Isolation Pin Notification

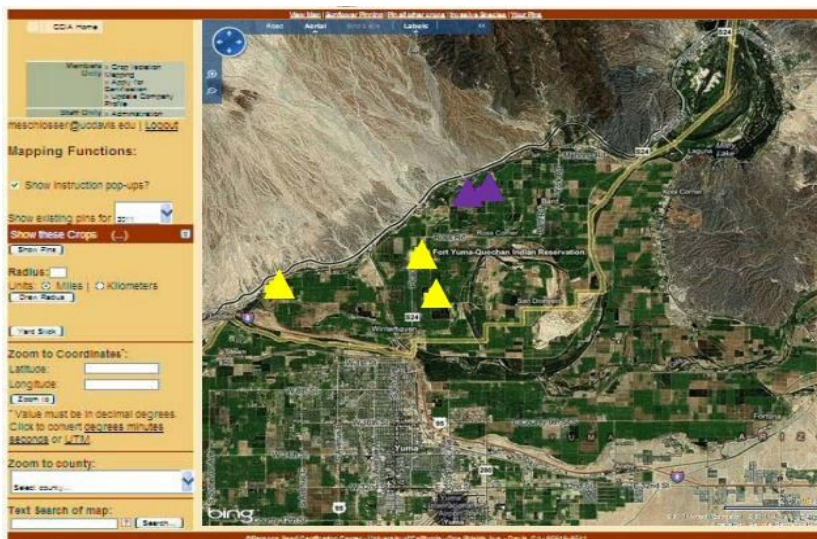
The Crop Isolation Map allows users to draw the boundaries of their fields so other seed companies planning to grow the same crop can make decisions about field locations and isolation distances.

When fields are drawn that violate the isolation distance of another field of the same crop, a notification email is sent immediately to the person responsible for the field being violated as well as the person who has just pinned the field. The CCIA has received reports that this notification process can slow down the mapping procedure.

The program has been modified to keep track of all isolation violations and send one email at the end of the day which will list all fields with isolation violations. The user will still receive a notice while pinning on the map that the field violates isolation but they may continue to pin the field. This is allowed because many times the field violated is planted by the same seed company using the same male line.

Inside this issue:

Staff Focus on Ashley Koala	2
Proper Packaging for Seed Samples	2
Important Points to Remember When Drawing Maps	2
CCIA Board of Directors List	2
Include Certification Number on Lab Reports of Analysis	3
Scholarships	3
CCIA Staff Contact Information	3



Crop Isolation Map showing company fields pinned in yellow and all other companies pins in purple.

Staff Focus on Ashley Koala

Ashley Koala joined the CCIA in October 2013 as a Certification Associate. She assists the field services staff with routine inspections of all crops entered into the certification program. She is currently finishing her last semester of studies at CSU, Chico. Upon graduation in December 2013 she will receive a BS degree in Agricultural Science, with a focus on Crop Science and a Minor in Agricultural Business. She is excited to join the CCIA team and to make a significant and lasting difference in the California seed industry.



Ashley and her husband Alfred are involved in international agricultural development; they manage a non-profit organization called “Feeding Nations Through Education”. The organization was founded by Alfred in 2009 and works to relieve famine and raise literacy in Burkina Faso, West Africa. One of Ashley’s passions in life is to use agriculture as a means to bring economic development to the lives of villagers in Burkina Faso and Africa as a whole.

Important Points to Remember When Drawing Maps

When drawing maps in an application or the Crop Isolation Map please remember the following procedures:

1. Points on the map should be drawn in a **clockwise** order. Start at the top left and work your way around.
2. Make sure the final drawing contains **no boundaries crossing itself**.
3. Each field must be entered as an individual application. Do not draw one field and then try to include a close, but different, field in the same application.
4. If the field is split by a road or canal, don’t worry about drawing around it. It is acceptable to draw a rectangle around the whole field rather than have a convoluted drawing with connectors between the actual fields.
5. Always place your final point, using a **right click**, sufficiently away from the first point so that you don’t create a border crisscross. Simple rectangular fields require 3 left clicks and one right click to complete a map drawing.
6. If you make any mistakes, simply clear the map and redraw.

CCIA Board of Directors

<u>DISTRICT</u>	<u>NAME</u>	<u>OFFICER</u>
District I	Ray Johnson	
District II	Mary Wadsworth	Treasurer
District III	Frank Saviez	
District IV	Tom Hearne	President
District V	Bob Baglietto	
District VI	Jack De Wit	
District VII	Chuck Schonauer	
District VIII	Glenn Hawes	Vice-President
Director-at-large	John Palmer	
Director-at-large	Ed Eggers	
Ag Commissioner’s Rep	Scott Hudson	
CA Seed Assn Rep	Ken Scarlett	
CA Farm Bureau Rep	Andrea Fox	
CA Dept of Food & Ag	John Heaton	
UCD College of A&ES	Jim Hill	
UC Cooperative Extension	Shannon Mueller	
Seed Biotechnology Center	Kent Bradford	
UCD Dept of Plant Sciences	Chris van Kessel	
Foundation Seed Program	Robert Stewart	

Proper Packaging of Seed Samples

Please package your seed samples carefully before sending them to the CCIA for analysis. Below is a photo of a seed sample package that ruptured and spilled seed within the box. This sample was contaminated and had to be replaced.



Scholarships

The CCIA provides scholarships to students attending the major agricultural universities in California. These students must indicate an active interest and participation in the seed industry, crop improvement, crop science clubs, seed packaging, seed and plant judging contests and/or activities related to seed production.



Charles Cochran, Bob Stewart,
Jose Carillo

California State University, Fresno

Charles Cochran is a Plant Health major in the Plant Science Bachelor's (B.S.) program at Fresno State. He is currently in his senior year and has a cumulative GPA of 3.8. Before starting his B.S., Charles attained an Associate's degree in plant science from College of the Sequoias in Visalia and then completed the necessary classes to transfer to Fresno State.

Jose Omar Carillo is a Plant Health major in the Plant Science Bachelor's (B.S.) program at Fresno State. He is currently in his junior year and has been actively

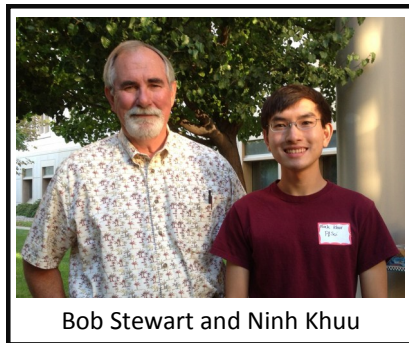
involved on the University Agricultural Laboratory (Fresno State Farm) as a student assistant to manage the irrigation, fertilization, and other agronomic needs since summer 2010.

Certification Numbers MUST be on the Laboratory Reports of Analysis

Seed conditioners - please be sure to **provide the certification number** to the seed laboratory when requesting analysis for a seed sample. The CCIA recommends that seed conditioners print the "Sample Form" that is specific to a seed lot and attach the form to the seed sample when it is sent to the laboratory. Then the seed laboratory will have all the information needed to record on the report. Any Report of Analysis submitted to the CCIA which does not include the certification number will be rejected and will need to be reprinted by the lab before the CCIA will accept the results.

Seed laboratories - please be sure to **record the certification number** on the Report of Analysis.

When the CCIA verifies the information submitted on the lab report, it is vital that we match the information to the specific seed lot. The certification number is unique and allows the CCIA to verify the match.



Bob Stewart and Ninh Khuu

UC Davis

Ninh Khuu is an undergraduate in Plant Science at UCD and currently carries a GPA of 3.5. He has excelled at the Student Farm with an internship and as a volunteer. Ninh Khuu spent several

quarters involved in crop production efforts. He taught himself a vast amount about seed saving practices and crop development in cucurbits. He also made and recorded several crosses between different varieties of pumpkins and melons. Ninh has also been a Student Assistant III at Foundation Plant Services (FPS) providing support.

CCIA Staff Contact Information

Larry R. Teuber	Executive Director	530-752-9824	lrteuber@ucdavis.edu
Barbara Bassett	Bookkeeper	530-752-0544	bjbassett@ucdavis.edu
Timothy Blank	Field Services	530-754-4854	tjblank@ucdavis.edu
Danielle Bowman	Tags/Seed Lab	530-754-9674	dmbowman@ucdavis.edu
Pablo Guzman	Field Services	530-754-9649	pguzman@ucdavis.edu
Nicole Hostert	Field Services & Seed Cert	530-752-9823	ndhostert@ucdavis.edu
Ashley Koala	Field Services	530-752-9828	akoala@ucdavis.edu
Alex Mkandawire	Field Services	530-752-6868	abmkandawire@ucdavis.edu
Katy Soden	Admin Manager	530-752-6979	krsoden@ucdavis.edu
Bob Stewart	Field Services	530-752-9826	rfstewart@ucdavis.edu
Mary Voorhees	Seed Lab	530-754-2249	mavoorhees@ucdavis.edu