



California Crop Improvement Association Tutorial

Willamette Valley Specialty Seed Association Map



Table of Contents

1. Purpose and details
2. Log in
3. Confidentiality and user agreement
4. Initial map page
5. Mapping functions
 - Show/no show pop-ups
 - Show pins
 - Show selected crops
 - Zooming to a location
 - Draw field
 - Edit field
 - Pin information
 - Draw radius
 - Yard stick
6. Edit your pins
7. Contact us



Purpose and details

► Purpose

- To facilitate communication and sharing of field information between companies producing different varieties and types of specialty seed in the Willamette Valley in order to prevent isolation conflicts.

► Details

- Certain functions of the map can be updated as needs of the industry change (i.e. changing isolation distance, adding new crops, adding/removing field information, etc.).
- Users must annually sign a confidentiality agreement.
- See website for current fees (fee is voided if pin is deleted before 5 days of initial pinning date)



Log in

- On the CCIA home page web site (<http://ccia.ucdavis.edu>) select "Maps".
- Scroll down to the bottom of the page to find the section for the Willamette Valley Specialty Seed Association Map and click on "Go to the map".

Willamette Valley Specialty Seed Association Map

[Go to the map](#)

Billing information:

1. Pins are billed after 5 days at \$10 per pin.
2. If the pin is deleted before 5 days there will be no charge for the pin.
3. Deleted pins are removed immediately.

Map opens on the 172nd day of the year.



- **OR** at the top of the page select your map from the "Map Quick Links".



Log in (continued)

- Log in to the map using **your email address** and **self-selected password**.

A screenshot of the California Crop Improvement Association (CCIA) website's login page. The page has a header with the text "University of California" and "California Crop Improvement Association". Below the header is a photograph of green foliage. Under the photo are two buttons: "CCIA Home" and "View Map". The "View Map" button is highlighted in yellow. Below these buttons is a login form with a red header that says "Log In". The form contains two input fields: "User Name:" with the text "ccia@ucdavis.edu" and "Password:" with masked characters. A "Log In" button is located at the bottom right of the form.

- Permissions are assigned to a **company** by the CCIA. Contact us at 530-752-0544 if your company is not already in our database.
- Permissions to access the map are assigned to an **individual** by their **company representative** by adding a "New Employee" to the company account. This is done using the "Members Only" page, select "Update Company Profile". To login to update your company profile, you must use your **organization ID number** and **assigned password**.



Confidentiality and user agreement

- The CCIA requires users of the Willamette Valley Specialty Seed Association Map to accept this agreement each year before access to the map is granted. The agreement will appear the first time a user attempts to access the map after October 1st of each year.

Representation of Intent and Confidentiality Agreement

WHEREAS, the CCIA operates an online mapping program available for seed production applicants. In order to minimize the risk of unintended pollen flow between fields, a specified distance between fields is required. It would be of benefit to the seed industry if seed production applicants mark their fields on an online map operated by the CCIA. Seed companies need to establish appropriate isolation distances between fields. Seed companies and Seed Certifying Agencies will be given access to the online mapping system.

WHEREAS, because of the confidentiality issues relative to seed production, applicant's information, as well as the undersigned's access to other seed companies' information via the mapping system, the CCIA requires that any representative granted access to the mapping system must sign this representation of intent and confidentiality agreement.

WHEREAS, the undersigned representative desires to maintain in confidence all proprietary and trade secret information obtained from the CCIA, its officers, directors, employees, agents, or contractors, including but not limited to information obtained from access to the CCIA's mapping system.

NOW THEREFORE, in consideration of the mutual covenants set forth herein and for other good and valuable consideration, the receipt and adequacy of which is hereby acknowledged, the parties hereto agree as follows:

1. The undersigned agrees that any and all information which is provided to the undersigned in whatever form by the CCIA or its officers, directors, employees, agents, or contractors, including but not limited to information obtained via access to the CCIA's online mapping system, is confidential, proprietary and trade secret information of seed producers and shall not be disclosed by the undersigned to any third party except as specifically authorized by the CCIA. The undersigned represents and warrants that it is not his/her intent to use the information obtained from the CCIA's mapping system to engage in any anticompetitive behavior with other seed companies or for seed production applicants and that he/she will not do so. Only the representative signing this Agreement may have access to the mapping system and he/she may not share his/her password with anyone else. Permissions to use/view the CCIA's mapping system may be revoked if the terms of this agreement are violated.
2. The undersigned agrees to indemnify and hold the CCIA and its officers, directors, employees, agents and representatives (collectively "CCIA") harmless and render the CCIA an immediate defense, including retention of legal counsel of the CCIA's choice, against any and all liabilities, losses, costs, damages, attorneys' fees and other expenses which the CCIA may incur or sustain as a consequence of the undersigned's breach of this Agreement.
3. If an action at law or in equity is necessary to enforce or interpret the terms of this Agreement, the prevailing party shall be entitled to recover its reasonable attorneys' fees and costs from the non-prevailing party in addition to any other reasonable relief to which it may be entitled. With respect to any suit, action or proceeding arising out of or relating to this Agreement, or the documentation related hereto, the parties hereby submit to the jurisdiction and venue of the appropriate court in the County of Yolo, State of California.
4. The covenants and agreements contained in this Agreement shall be binding upon and shall inure to the benefit of the heirs, successors and assigns of the parties hereto.
5. No change, amendment or modification of this Agreement shall be valid unless in writing and signed by the parties hereto.
6. This Agreement shall be construed and governed pursuant to the laws of the State of California.

User Agreement for Vegetable Seed Isolation Map

1. Recontracting with established growers will take precedence as to variety to be grown in an isolation area (an isolation area is a geographic area where a particular class or type of a given crop is grown).
2. The first contract in a new isolation area shall establish precedence as to variety.
3. Where two or more companies have been contracting with the same grower, conflicts will be settled by the companies involved and the grower as to varieties to be grown and isolation distances.
4. Before contracting with a new grower, the seed company will check the master map to be sure that isolation is being maintained. Any problems which arise are to be settled between companies involved in each case. The rights of all companies will be respected.

Login: akoala@ucdavis.edu
Name: Ashley Koala
Company: CCIA Milling Co.

☒ I agree to the Representation of Intent and Confidentiality Agreement and the User Agreement

☐ I do not agree to the Representation of Intent and Confidentiality Agreement and the User Agreement (you will be logged out of the system)

You must accept the agreement in order to gain access.



Initial page

- The initial page is this map. The default view is “View Map”.
- The crop links on the yellow menu bar are used to place a pin on the map.
- On the far right is a link to ‘Your Pins’.
- Each crop is assigned a unique shape.

CCIA Home

View Map Beta Fall Brassica Spring Brassica 10 Spring Brassica 18 Radish Spinach Onion Umbelliferous Chicory Endive Cucumbers Squash Sunflowers Flowers Miscellaneous Your Pins

meschlosser@ucdavis.edu [Logout](#)

Mapping Functions:

☒ Show instruction pop-ups?

Show existing pins for 2021

Include previous year priority pins? ☒

Show these Crops (...) ☒

Find Pin by #

Radius:

Units: ☒ Miles ☐ Kilometers

Zoom to Coordinates*:

Latitude:

Longitude:

* Value must be in decimal degrees. Click to convert [degrees minutes seconds](#) or [UTM](#)

Text Search of map:

Map view: WAS Aerial

Map controls: + -

Map data: 9/14/2020 6:00:07 PM

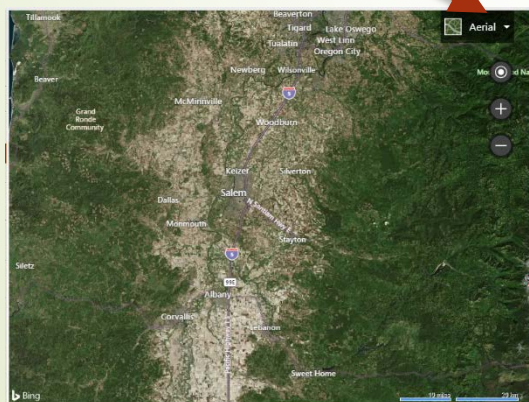
Crop Links and Shapes:

- Beta: Diamond
- Fall Brassica: Square
- Spring Brassica 10 chromosome: Triangle
- Spring Brassica 18 chromosome: Plus
- Radish: X
- Spinach: Circle
- Onion: Circle
- Umbelliferous: Inverted Triangle
- Chicory: Triangle
- Endive: Star
- Cucumbers: Square
- Squash: Triangle
- Sunflowers: Triangle
- Flowers: Circle
- Misc.: X

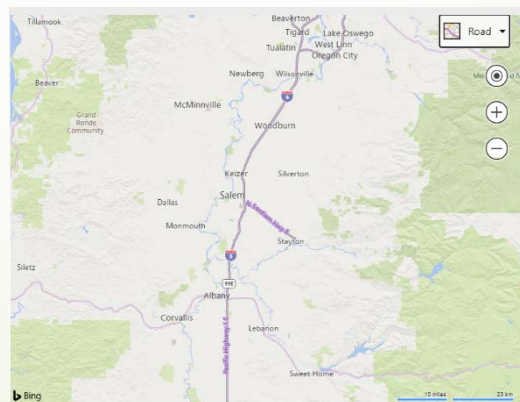


Initial page

- In the upper right corner of the map is a drop-down menu to select different map views:
 - Aerial – a detailed look from above
 - Road – a standard road map
 - Bird's eye – a closer view that can be rotated
- Toggle 'Labels' to view/not view cities, roads, forest names, etc.



Aerial



Road



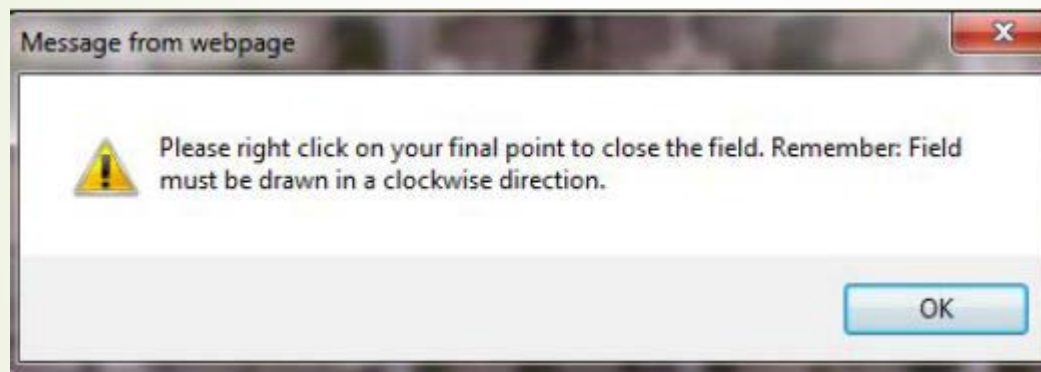
Bird's eye



Mapping Functions

Show/no show pop-ups

- The map is programmed with helpful pop-up instructions like this:



- As you become more familiar with the mapping functions, you may choose to turn off the instruction pop-ups.

CCIA Home

[View Map](#) [Beta](#) [Fall Brassica](#) [Spring Brassica 10](#) [S](#)

[meschlosser@ucdavis.edu](#) | [Logout](#)

Mapping Functions:

☒ Show instruction pop-ups?

[Clear Map](#)

Show existing pins for [2021](#)

Include previous year priority pins? ☒

Show these Crops [\(...\)](#)

[Show Pins](#)

Find Pin by #

[Find](#)

Radius:

Units: ☒ Miles | ☐ Kilometers [Draw Radius](#)

[Yard Stick](#)

Zoom to Coordinates*:

Latitude:

Longitude:

[Zoom to](#)

* Value must be in decimal degrees. Click to convert [degrees minutes seconds](#) or [UTM](#).

Text Search of map:

[?](#) [Search...](#)



Mapping functions

Show pins

The screenshot shows the CCIA Home web interface. At the top, there are navigation tabs: "View Map", "Beta", "Fall Brassica", "Spring Brassica 10", and "S". Below these, the user's email "meschlosser@ucdavis.edu" and a "Logout" link are displayed. The "Mapping Functions:" section contains a checked checkbox for "Show instruction pop-ups?", a "Clear Map" button, and a dropdown menu for "Show existing pins for" set to "2021". Below this is a checked checkbox for "Include previous year priority pins?". A red arrow points to the "Show these Crops (...)" button, which has a dropdown arrow. Below it is the "Show Pins" button. Further down, there is a "Find Pin by #" section with an input field and a "Find" button. Below that is a "Radius:" section with an input field, "Units:" set to "Miles", a radio button for "Kilometers", and a "Draw Radius" button. There is also a "Yard Stick" button. The "Zoom to Coordinates*" section has input fields for "Latitude:" and "Longitude:", and a "Zoom to" button. A footnote states: "* Value must be in decimal degrees. Click to convert [degrees minutes seconds](#) or [UTM](#)." At the bottom, there is a "Text Search of map:" section with an input field, a help icon, and a "Search..." button.

- Click button "Show Pins" to view **all the pins** on the map. See next page to select individual crops.
- If there are many pins on the map, depending on your connection speed, it may take a minute or more for the pins to show. If it is taking a while to map the pins, **be patient and wait for the pins to show**.
- If you zoom to a specific location and request to show pins, when you zoom out you will continue to see **only the pins** that showed in the zoomed screen.
- **Tip:** Zoom to show a large area of interest, click "Show Pins", then as you zoom in and out all pins will continue to show. However, you may need to wait a bit for all the pins to load.



Mapping functions

Show pins – show selected crops

Mapping Functions:

☒ Show instruction pop-ups?

Show existing pins for

Include previous year priority pins? ☒

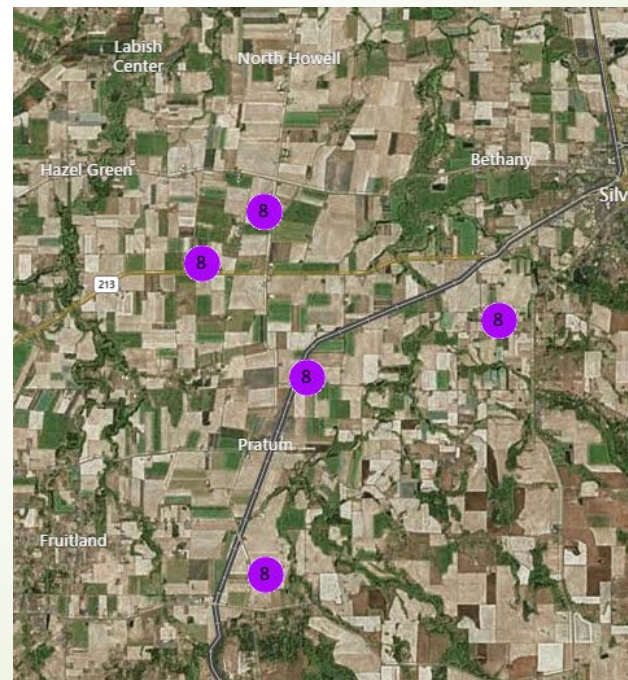
Show these Crops (Hide)

- Arugula
- Brassica Spring-Other-10 chromosomes
- Brussels-9 chromosomes
- Bunching Onions
- Cabbage-9 chromosomes
- Canola
- Cauliflower-9 chromosomes
- Chicory
- Chinese Cabbage-10 chromosomes
- Chinese Kale-10 chromosomes

Use the control (ctrl) key to toggle selections when clicking a crop. You can also hold down the shift key to select all crops between the first and second clicks.

By default, all crops you have access to are selected. You need only adjust the list to remove crops you do not need shown at this time.

- Click on "Show these crops (...)" to select only the crops you may want to view.
- Use the "Ctrl" key to select more than one crop.
- Then click on "Show pins" to view pin locations.

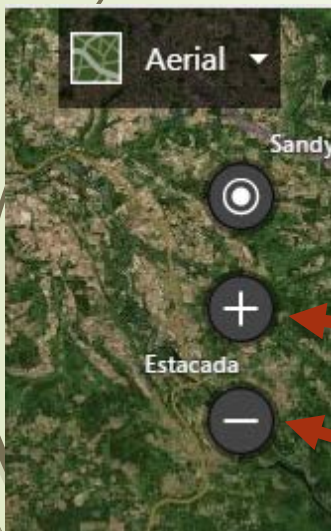




Mapping functions

Zooming to a location

- Zooming in shows actual field location and boundaries of the field.
- Move the viewable area by clicking and dragging the mouse.
- There are several ways to zoom:
 - Enter the latitude & longitude of a desired location. The map will place this location in the center of the screen.
 - Enter text for any location that may be noted on the map; such as city, national park, etc.
 - Point cursor to a specific area on the map and double click or use the mouse roller.
 - Click on the **+** **OR** double click in the map to zoom in.
 - Click on the **-** to zoom out.



Mapping Functions:

☒ Show instruction pop-ups?

Show existing pins for

Include previous year priority pins? ☒

Show these Crops (...)

Find Pin by #

Radius:
Units: ☒ Miles | ☐ Kilometers

Zoom to Coordinates*:
Latitude:
Longitude:

* Value must be in decimal degrees. Click to convert [degrees minutes seconds](#) or [UTM](#).

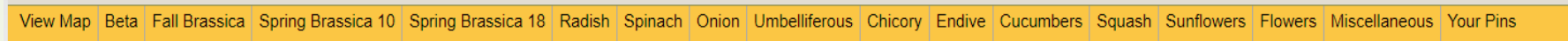
Text Search of map:



Mapping functions

Draw field

- Change from "View Map" to one of the pinning maps by selecting a crops from the yellow menu bar.



- The map will then open to a new map with pin detail information at the top of the page for you to complete. Fill in all the information.

Crop: Fodder Beets ▼

Group: Select group... ▼

Acres:

Pin Priority: Select... ▼

Pin Class: Select... ▼

Color: Any ▼

Comments: (only seen by your org)

** All hybrids shall be pinned based on the **Type of Male Parent** rather than the type of completed hybrid.

- Crops may only be pinned at selected times. If the crop you selected is not able to be pinned you will see this message:

At this time, only select maps are open. Please check back later.



Mapping functions

Draw field

- Zoom to the field you plan to pin.
- Click on "Drawing mode OFF" to turn on drawing OR click on the green polygon image.

Mapping Functions:

☒ Show instruction pop-ups?

Please right click on your final point to close the field

Drawing Mode OFF | Clear Map

Show existing pins for 2021

Include previous year priority pins? ☒

Show these Crops (...) ☒

Show Pins

Find Pin by #

Find

Radius:

Units: ☒ Miles | ☐ Kilometers Draw Radius

Yard Stick

Zoom to Coordinates*:

Latitude:

Longitude:

Zoom to

* Value must be in decimal degrees. Click to convert [degrees minutes seconds](#) or [UTM](#).

Text Search of map:

Search...

Crop: Fodder Beets

Group: Select group...

Pin Priority: Select...

Pin Class: Select...

Comments: (only seen by your org)

Pin Field

** All hybrids shall be named based on the Type of Male Parent rather than the type of completed hybrid.

Aerial

Map controls: Aerial view, zoom in (+), zoom out (-), and a location pin icon.



Mapping functions

Draw field

- This pop-up will appear:

wvssa.cciamaps.ucdavis.edu says

Please double click or right click on your final point to close the field.

You may also use the escape key to stop drawing. Remember: Field must be drawn in a clockwise direction.

OK

- Left click to begin drawing the field boundaries. Continue around the field in a clockwise direction left clicking at each point.
- Right click your final point. The map will connect the first click with the last click.
- The field will show as a light green.
- Click "Pin Field" button when finished. Be certain it is correct before selecting this button. The field map cannot be edited after submission.
- After you select "Pin Field" a message at the top of the pinning menu will read "Field successfully pinned. Pin ID#12345."





Mapping functions

Edit field

- You may only edit your field drawing **prior** to clicking the "Pin Field" button. Once the field has been pinned it is final. To edit the field before pinning:
 - Drawing mode was turned off automatically when the last point on the map was right clicked.
 - Turn drawing mode on again to clear the map and draw again.
- If you realize you have made an error after submitting the pin you may delete the pin and mark the pin as 'inactive' from "Your Pins".



Mapping functions

Pin information

- Each crop has been assigned a different shape.
- The number on the shape corresponds to a group within this crop – such as
 - Radish white stem
 - Radish red root hybrid
- The map is programmed with isolation distances allowed between crops.
- Pointing the cursor at a pin will provide the following information:
 - Pin number
 - Company
 - Crop
 - Group
 - Pin date
 - Contact information

Beta	1
Fall Brassica	1
Spring Brassica 10 chromosome	1
Spring Brassica 18 chromosome	1
Radish	1
Spinach	1
Onion	1
Umbelliferous	1
Chicory	1
Endive	1
Cucumbers	1
Squash	1
Sunflowers	1
Flowers	1
Misc.	1



Mapping functions

Draw radius

- You may draw a radius to check the isolation distance from other fields.
- Enter radius distance, select miles or kilometers
- Click on button "Draw Radius".
- A pop-up will appear:

wvssa.cciamaps.ucdavis.edu says

Please right click on the map at the center of your radius. Click "Draw Radius" again to cancel circle drawing.

OK

- A circle is light green will be drawn at the radius requested.

CCIA Home

[View Map](#) [Beta](#) [Fall Brassica](#) [Spring Brassica 10](#) [S](#)

[meschlosser@ucdavis.edu](#) | [Logout](#)

Mapping Functions:

☒ Show instruction pop-ups?

Show existing pins for

Include previous year priority pins? ☒

[Show these Crops](#) (...)

Find Pin by #

Radius:

Units: ☒ Miles | ☐ Kilometers

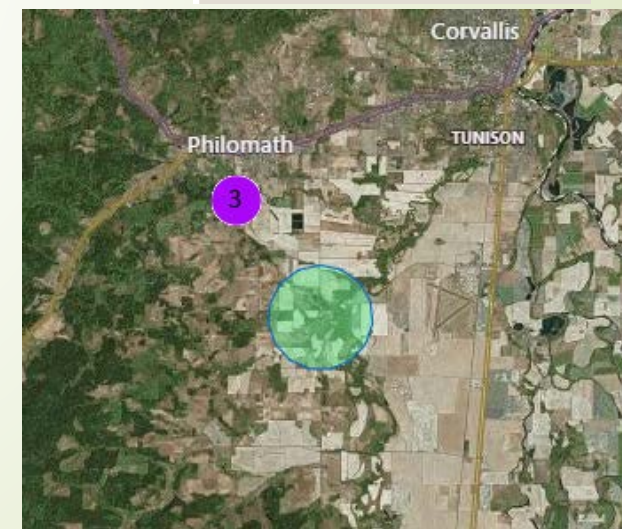
Zoom to Coordinates*:

Latitude:

Longitude:

* Value must be in decimal degrees. Click to convert [degrees minutes seconds](#) or [UTM](#).

Text Search of map:

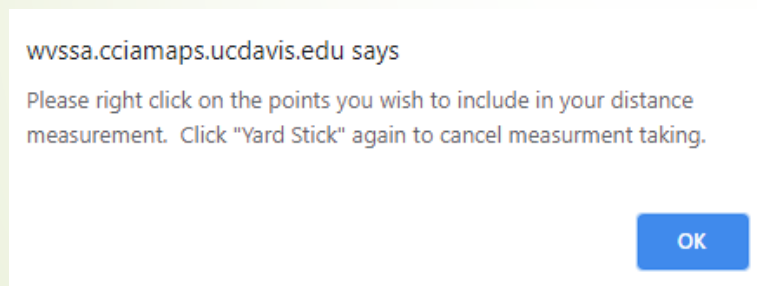




Mapping functions

Use yard stick

- You may measure the distance between 2 points (fields) in miles with the yard stick.
- Click "Yard Stick" button.
- A pop-up message will appear:



- Distance will be displayed near the "Yard Stick" button.



CCIA Home

[View Map](#) [Beta](#) [Fall Brassica](#) [Spring Brassica 10](#) [S](#)

[meschlosser@ucdavis.edu](#) | [Logout](#)

Mapping Functions:

☒ Show instruction pop-ups?

Show existing pins for

Include previous year priority pins? ☒

Show these Crops (...)

Find Pin by #

Radius:

Units: ☒ Miles | ☐ Kilometers

Zoom to Coordinates*:

Latitude:

Longitude:

* Value must be in decimal degrees. Click to convert [degrees minutes seconds](#) or [UTM](#).

Text Search of map:

2.064 miles



Editing “Your Pins”

- All pins are assigned a ID unique number in the order they are submitted to the map. It does not matter which company enters the pin.
- Your pins will not have sequential numbers.
- Click on “Your Pins” on the yellow menu bar.



View Map	Beta	Fall Brassica	Spring Brassica 10	Spring Brassica 18	Radish	Spinach	Onion	Umbelliferous	Chicory	Endive	Cucumbers	Squash	Sunflowers	Flowers	Miscellaneous	Your Pins
----------	------	---------------	--------------------	--------------------	--------	---------	-------	---------------	---------	--------	-----------	--------	------------	---------	---------------	-----------

- A table of your pins will be displayed.

	ID	Crop	Variety	Type	Date Planted	Date Entered	comments	deleted
Select	18984	Carrot	555	Orange Hybrid Nantes	12/23/2015	12/15/2015		<input checked="" type="checkbox"/>
Select	18983	Carrot	444	Orange Hybrid Odd/Unique	12/31/2015	12/15/2015		<input type="checkbox"/>
Select	18982	Carrot	555	Red Hybrid Imperator	12/30/2015	12/15/2015		<input type="checkbox"/>
Select	18981	Carrot	asdf	White Hybrid Bulky Tapered	12/27/2015	12/15/2015		<input type="checkbox"/>
Select	18980	Carrot	ggg	Purple Hybrid Bulky Blunted	12/31/2015	12/15/2015		<input type="checkbox"/>
Select	18947	Carrot	test 4	Orange Hybrid Bulky Tapered	12/24/2015	12/8/2015		<input type="checkbox"/>
Select	18946	Carrot	test 1	Orange Hybrid Nantes	1/1/2016	12/8/2015		<input type="checkbox"/>
Select	18940	Carrot	test	Orange Hybrid Bulky Blunted	12/10/2015	12/8/2015		<input type="checkbox"/>
Select	17894	Onion	test	White Flat Open Pollinated Granex	11/5/2015	11/16/2015		<input type="checkbox"/>
Select	17860	Radish	test	White Raphanus Radish	11/3/2015	11/13/2015		<input type="checkbox"/>
Select	17859	Kohl		Kohlrabi	10/27/2015	11/13/2015		<input type="checkbox"/>
Select	17858	Daik		us Daikon Radish	11/3/2015	11/13/2015		<input type="checkbox"/>
Select	17857	Turnip	test	Select color... Brassica Turnip	10/26/2015	11/13/2015		<input type="checkbox"/>
Select	17856	Swede	test	Green Brassica Rutabaga	10/27/2015	11/13/2015		<input type="checkbox"/>

Click “Select” to edit pin information.

- Click on “Select” to edit pin information.
- Sort table by clicking on any of the headers.



Editing "Your Pins"

- Enter a pin ID to search for a specific pin.
- Select the crop year.
- You may also export your pin table to Excel.
- After selecting a pin to edit, only the white boxes may be changed.
- Deleted pins are removed from the map immediately.
- The \$10 fee is voided if the pin is deleted before 5 days of initial pinning date.

Find Pin: Leave blank to find all pins for given year

Show pins for: ▼



Contact us

➤ For more information or assistance, please contact:

Timothy Blank

Email: tjblank@ucdavis.edu

Phone: 530-754-4854

If Timothy is not available,
please contact the CCIA main office at
530-752-0544.