

ALFALFA ISOLATION MANAGEMENT MAP



TABLE OF CONTENTS

Click on an item below to jump to that section

- ❖ [Purpose and Background](#)
- ❖ [Log In](#)
- ❖ [Confidentiality Agreement](#)
- ❖ [Initial Page - Mapping Functions](#)
 - ❖ [Zooming to a Location](#)
 - ❖ [Show Pop-ups](#)
 - ❖ [Show Pins](#)
 - ❖ [Draw Field](#)
 - ❖ [Edit Field](#)
 - ❖ [Erase Field](#)
 - ❖ [Edit Field Boundaries](#)
 - ❖ [Pinning Menu](#)
 - ❖ [Field Violations](#) (isolation distances programmed into map)
 - ❖ [Pin Field](#)
 - ❖ [Draw Radius](#)
 - ❖ [Yard Stick](#)
- ❖ [Editing Your Pins](#)
- ❖ [Contact Us](#)

PURPOSE AND BACKGROUND

[Table of Contents](#)

■ Purpose

- To facilitate communication and sharing of field information between companies producing different varieties and types of alfalfa in order to prevent isolation conflicts.

■ Background

- Certain functions of the map can be updated as needs of the industry change (i.e. changing isolation distance, adding new crops, adding/removing field information, etc.).
- Users must annually sign a confidentiality agreement.
- Fee: see website for current fees (fee voided if pin changed to “inactive” before 11:00pm on the date of initial pinning)

LOGIN

[Table of Contents](#)

To login, click on “Go to the map”.

Alfalfa Isolation Management Map (AIMM)

This map is for GE alfalfa fields.

[Go to the map](#)

See [Alfalfa Isolation Map Tutorial](#) (pdf) for isolation distances programmed into the map.

Supporting documents: [Click to login.](#)

[Grower Opportunity Zones](#) (GOZ) are defined geographic areas within which a validated super-majority (>80%) of alfalfa seed growers elect to focus on the production of either APS or GE alfalfa seed. The current GOZ areas are displayed on this map.

Detailed description of the map and coexistence (pdf)

[Facilitation of Coexistence:](#) Alfalfa Isolation Management Map and Alfalfa Seed Stewardship Program

New map year begins August 1st of each year.

Billing information:

1. Pins are billed each night at 11:00 pm at \$10 per pin.
2. If the status of a pin is changed to "inactive" before this time there will be no charge for the pin.
3. Inactive pins are deleted from the map after 60 days.

LOGIN

Login using your email address and self-selected password.

Home	Certification Programs	Crop Isolation Mapping	Members Only	Agricultural Commissioners	CCIA Staff Only
View Map	Your Pins	Renewals			

Log In

User Name:

Password:

Log In

Permissions are assigned to an individual by the CCIA. To request access, contact us at 530-752-0544.

REPRESENTATION OF INTENT AND CONFIDENTIALITY AGREEMENT

[Table of Contents](#)

This agreement replaced the signed agreements and will appear the first time a user attempts to access the Alfalfa Isolation Management Map after August 1st of each year. This agreement is required to be signed each year before access to the map is granted.

Representation of Intent and Confidentiality Agreement

WHEREAS, CCIA operates an online mapping program available for alfalfa seed production applicants. Seed of both genetically engineered (GE) and conventional cultivars is produced within the same production areas. In order to minimize the risk of unintended pollen flow between fields, a specified distance between fields is required. It would be of benefit to the alfalfa seed industry if alfalfa seed production applicants mark their fields on an online map operated by CCIA and to indicate if the field is GE or non-GE so that everyone will know the isolation distance required between fields. Seed companies need to establish appropriate isolation distances between fields. Seed companies and Seed Certifying Agencies will be given access to the online mapping system.

WHEREAS, because of the confidentiality issues relative to alfalfa seed production applicant's information, as well as the undersigned's access to other seed companies' information via the mapping system, CCIA requires that any seed certifying agency or seed company representative granted access to the mapping system must sign this representation of intent and confidentiality agreement.

WHEREAS, the undersigned seed certifying agency or seed company representative desires to maintain in confidence all proprietary and trade secret information obtained from CCIA, its officers, directors, employees, agents, or contractors, including but not limited to information obtained from access to CCIA's mapping system.

NOW THEREFORE, in consideration of the mutual covenants set forth herein and for other good and valuable consideration, the receipt and adequacy of which is hereby acknowledged, the parties hereto agree as follows:

1. The undersigned agrees that any and all information which is provided to the undersigned in whatever form by CCIA or its officers, directors, employees, agents, or contractors, including but not limited to information obtained via access to CCIA's online mapping system, is confidential, proprietary and trade secret information of seed producers and shall not be disclosed by the undersigned to any third party except as specifically authorized by CCIA. The undersigned represents and warrants that it is not his/her intent to use the information obtained from CCIA's mapping system to engage in any anticompetitive behavior with other seed companies or for alfalfa seed production applicants and that he/she will not do so. Only the seed certifying agency or seed company representative signing this Agreement may have access to the mapping system and he/she may not share his/her password with anyone else. Permissions to use/view the CCIA's mapping system may be revoked if the terms of this agreement are violated.
2. The undersigned agrees to indemnify and hold CCIA and its officers, directors, employees, agents and representatives (collectively "CCIA") harmless and render CCIA an immediate defense, including retention of legal counsel of CCIA'S choice, against any and all liabilities, losses, costs, damages, attorneys' fees and other expenses which CCIA may incur or sustain as a consequence of the undersigned's breach of this Agreement.
3. If an action at law or in equity is necessary to enforce or interpret the terms of this Agreement, the prevailing party shall be entitled to recover its reasonable attorneys' fees and costs from the non-prevailing party in addition to any other reasonable relief to which it may be entitled. With respect to any suit, action or proceeding arising out of or relating to this Agreement, or the documentation related hereto, the parties hereby submit to the jurisdiction and venue of the appropriate court in the County of Yolo, State of California.
4. The covenants and agreements contained in this Agreement shall be binding upon and shall inure to the benefit of the heirs, successors and assigns of the parties hereto.
5. No change, amendment or modification of this Agreement shall be valid unless in writing and signed by the parties hereto.
6. This Agreement shall be construed and governed pursuant to the laws of the State of California.

Login: akoala@ucdavis.edu

Name: Ashley Koala

Company: CCIA Milling Co.

☒ I agree to the Representation of Intent and Confidentiality Agreement

☐ I do not agree to the Representation of Intent and Confidentiality Agreement (you will be logged out of the system)

You *must* accept the agreement in order to gain access.

Table of Contents

Mapping functions are on the left side of the map.

Mapping Functions:	Category Select... ▾	Crop Select... ▾	Type Select... ▾	Class Select... ▾	Last Harvest 2016 ▾
<input checked="" type="checkbox"/> Show instruction pop-ups?	Variety <input type="text"/>	Status Pushed ▾	Acres <input type="text"/>	Date Planted <input type="text"/>	Pin Field <input type="button" value="Pin Field"/>
Please right click on your final point to close the field					
Drawing Mode OFF <input type="button" value="Clear Map"/>					
Please pin in "clockwise" direction.					
Show existing pins for 2016 ▾					
<input type="checkbox"/> Show only my org's pins?					
<input checked="" type="checkbox"/> Show GOZ?					
<input type="button" value="Show Pins"/>					
Find Pin by #					
<input type="text"/> Find					
Radius: <input type="text"/>					
Units: <input checked="" type="radio"/> Miles <input type="radio"/> Kilometers					
<input type="button" value="Draw Radius"/>					
<input type="button" value="Yard Stick"/>					
Zoom to Coordinates*					
Latitude: <input type="text"/>					
Longitude: <input type="text"/>					
<input type="button" value="Zoom to"/>					
* Value must be in decimal degrees. Click to convert degrees minutes seconds or UTM .					
Zoom to CA county:					
Select county... ▾					
Text Search of map:					
<input type="text"/> <input type="button" value="🔍"/>					
<input type="button" value="Search..."/>					

© 2015 Microsoft Corporation. All rights reserved. Bing Maps. © 2015 HERE. San Diego, CA

Table of Contents

- 3. Enter text for any location that may be noted on the map (city, national park, etc.).**

Mapping Functions:

☒ Show instruction pop-ups?

Please right click on your final point to close the field

Drawing Mode OFF

Clear Map

Please pin in "clockwise" direction.

Show existing pins for 2016

☐ Show only my org's pins?
 ☒ Show GOZ?

Show Pins

Find Pin by #

Find

Radius:

Units: ☒ Miles | ☐ Kilometers

Draw Radius

Yard Stick

Zoom to Coordinates *

Latitude:

Longitude:

Zoom to

* Value must be in decimal degrees. Click to convert [degrees minutes seconds](#) or [UTM](#).

Zoom to CA county:

Select county...

Text Search of map:

?

Search...

Category

Select...

Variety

Crop

Select...

Status

Pushed

Type

Select...

Acres

Class

Select...

Date Planted

Last Harvest

2016

Pin Field

Comments: (only seen by your org)

4. Point to a specific area the map and double click repeatedly or the mouse rollover.

5. Use Shift + hold click to draw a square on the map. Let go of mouse, click again to zoom.

Move the viewable area by clicking and dragging the mouse.

© 2015 Microsoft Corporation. All rights reserved. Bing. © 2015 HERE. San Diego.

4. Point to a specific area on the map and double click repeatedly or use the mouse roller.

5. Use Shift + hold click to draw a square on the map. Let go of mouse, click to zoom.

Move the viewable area by clicking and dragging the mouse.

MAPPING FUNCTIONS – SHOW POP-UPS

[Table of Contents](#)

Mapping Functions:

☒ Show instruction pop-ups?

Please right click on your final point to close the field

Drawing Mode OFF

Clear Map

Please pin in "clockwise" direction.

Show existing pins for 2018 ▼

☐ Show only my org's pins?

☒ Show GOZ?

Show Pins

Find Pin by

Find

Radius:

Units: ☒ Miles | ☐ Kilometers

Draw Radius

Yard Stick

Zoom to Coordinates*

Latitude:

Longitude:

Zoom to

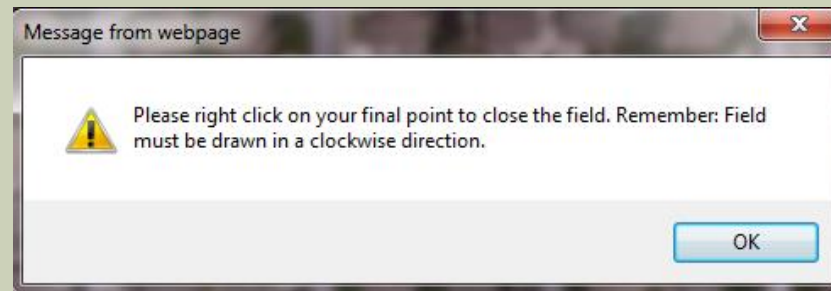
* Value must be in decimal degrees. Click to convert [degrees minutes seconds](#) or [UTM](#).

Zoom to CA county:

Text Search of map:

Search...

The map is programmed with helpful pop-up instructions like this:



As you become more familiar with the mapping functions, you may choose to turn off instruction pop-ups.

MAPPING FUNCTIONS – SHOW PINS

[Table of Contents](#)

Mapping Functions:

☒ Show instruction pop-ups?

Please right click on your final point to close the field

Drawing Mode OFF

Clear Map

Please pin in "clockwise" direction.

Show existing pins for 2018 ☒

☐ Show only my org's pins?

☒ Show GOZ?

Show Pins

Find Pin by #

Find

Radius:

Units: ☒ Miles | ☐ Kilometers

Draw Radius

Yard Stick

Zoom to Coordinates*

Latitude:

Longitude:

Zoom to

* Value must be in decimal degrees. Click to convert [degrees minutes seconds](#) or [UTM](#).

Zoom to CA county:

Text Search of map:



Search...

If there are a lot of pins on the map, depending on your connection speed, it may take a minute or more for the pins to show. If it is taking a while to map the pins, be patient and wait for the pins to show.

Click button "Show Pins" to show all pins.

If you zoom to a specific location and show pins, when you zoom out you will continue to see only the pins that showed in the zoomed screen.

Tip: Zoom to show a large area of interest, click "Show Pins", then as you zoom in and out all pins will continue to show.

MAPPING FUNCTIONS – SHOW PINS

All pins selected will be displayed; different colors for different designations.

Mapping Functions:

☒ Show instruction pop-ups?

Please right click on your final point to close the field
Drawing Mode OFF Clear Map
Please pin in "clockwise" direction.

Show existing pins for 2016
☐ Show only my org's pins?
☐ Show GOZ?
Show Pins

Find Pin by #
Find

Radius:
Units: ☒ Miles ☐ Kilometers
Draw Radius

Yard Stick

Zoom to Coordinates*:
Latitude:
Longitude:
Zoom to

* Value must be in decimal degrees. Click to convert [degrees minutes seconds](#) or [UTM](#).

Zoom to CA county:
Select county...

Text Search of map:
Search...

Category: Select...
Variety:
Comments: (only seen by your org)

Crop: Select...
Status: Pushed
Acres:

Type: Select...
Date Planted:

Class: Select...
Last Harvest: 2016
Pin Field

Simulated Data

Pin Designations:

- Your pins
 - Other company pins
 - GE fields pinned by your company
 - GE fields pinned by other company
 - Conventional hay fields
 - GE hay fields
 - GE Grower Opportunity Zone (GOZ)
 - Adventitious Presence Sensitive (APS)
- YOUR pins will be yellow or outlined in yellow.
 - Pins for ALL other companies will be purple or outlined in purple.

MAPPING FUNCTIONS – SHOW PINS

Zooming in shows actual field location and boundaries of the field.

Mapping Functions:

☒ Show instruction pop-ups?

Please right click on your final point to close the field
Drawing Mode OFF Clear Map
Please pin in "clockwise" direction.

Show existing pins for 2016
☐ Show only my org's pins?
☒ Show GOZ?
Show Pins

Find Pin by #
Find

Radius:
Units: ☒ Miles ☐ Kilometers
Draw Radius

Yard Stick

Zoom to Coordinates*:
Latitude:
Longitude:
Zoom to

* Value must be in decimal degrees. Click to convert [degrees minutes seconds](#) or [UTM](#).

Zoom to CA county:
Select county...
Text Search of map:
Search...

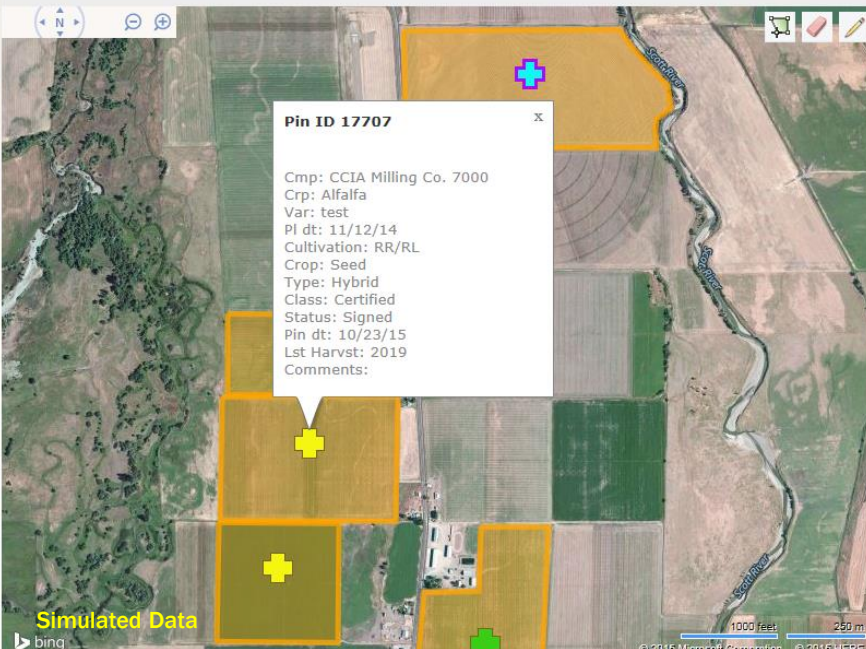
Category: Select...
Variety:
Comments: (only seen by your org)

Crop: Select...
Status: Pushed

Type: Select...
Acres:

Class: Select...
Date Planted:

Last Harvest: 2016
Pin Field



Pin ID 17707

Cmp: CCIA Milling Co. 7000
Crp: Alfalfa
Var: test
Pl dt: 11/12/14
Cultivation: RR/RL
Crop: Seed
Type: Hybrid
Class: Certified
Status: Signed
Pin dt: 10/23/15
Lst Harvst: 2019
Comments:

Simulated Data

1000 feet 250 m

© 2015 Microsoft Corporation © 2015 HERE

Mouse-over a yellow pin (your company) to view detailed field information:

- Pin ID
- Company
- Crop
- Variety
- Planting Date
- Cultivation (Category)
- Crop (Hay or Seed)
- Type
- Class (of Seed)
- Pin Status
- Date Pinned
- Expected Last Harvest
- Comments

MAPPING FUNCTIONS – SHOW PINS

Zooming in shows actual field location and boundaries of the field.

Mapping Functions:

☒ Show instruction pop-ups?

Please right click on your final point to close the field
Drawing Mode OFF Clear Map
Please pin in "clockwise" direction.

Show existing pins for 2016 ▾
☐ Show only my org's pins?
☒ Show GOZ?
Show Pins

Find Pin by #
Find

Radius:
Units: ☒ Miles ☐ Kilometers
Draw Radius

Yard Stick

Zoom to Coordinates*:
Latitude:
Longitude:
Zoom to

* Value must be in decimal degrees. Click to convert [degrees minutes seconds](#) or [UTM](#).

Zoom to CA county:
Select county... ▾

Text Search of map:
Search...

Category: Select... ▾
Variety:
Comments: (only seen by your org)

Crop: Select... ▾
Status: Pushed ▾

Type: Select... ▾
Acres:

Class: Select... ▾
Date Planted:

Last Harvest: 2016 ▾
Pin Field

Pin ID 17712

Cmp: CCIA 7405
Crp: Alfalfa
Pl dt: 09/29/15
Cultivation: RR/RL
Crop: Seed
Type: Hybrid
Class: Certified
Status: Signed
Pin dt: 10/23/15
Lst Harvst: 2019

12/11/2015 1:15:16 PM

Simulated Data
bing

1000 feet 250 m
© 2016 Microsoft Corporation © 2016 HERE

Mouse-over a purple pin (other company) to view detailed field information:

- Pin ID
- Company
- Crop
- Planting Date
- Cultivation (Category)
- Crop (Hay or Seed)
- Type
- Class (of Seed)
- Pin Status
- Date Pinned
- Expected Last Harvest

(Everything, but variety and comments.)

MAPPING FUNCTIONS – DRAW FIELD

[Table of Contents](#)

Zoom to field you plan to pin.

Mapping Functions:

☒ Show instruction pop-ups?

Please right click on your final point to close the field

Drawing Mode OFF Clear Map

Please pin in "clockwise" direction.

Show existing pins for

☐ Show only my org's pins?

☐ Show GGP?

Longitude:

* Value must be in decimal degrees. Click to convert [degrees minutes seconds](#) or [UTM](#).

Zoom to CA county:

Text Search of map:

Category

Variety

Crop

Status

Type

Acres

Class

Date Planted

Last Harvest

Comments: (only seen by your org)

12/10/2015 12:08:44 PM

500 feet 100 m

© 2015 Microsoft Corporation © 2015 HERE

After zoomed in to field, click on "Drawing Mode OFF" or on the green polygon icon to turn on the ability to mark boundaries of field you plan to pin.

MAPPING FUNCTIONS – DRAW FIELD

Mapping Functions:

☒ Show instruction pop-ups?

Please right click on your final point to close the field

Drawing Mode ON Clear Map

Please pin in "clockwise" direction.

Show existing pins for

☐ Show only my org's pins?

Category

Crop

Type

Variety

Status

Acres

Class

Date Planted

Last Harvest

Comments: (only seen by your org)

Zoom to Coordinates *: Latitude: Longitude: Zoom to

* Value must be in decimal degrees. Click to convert [degrees](#) [minutes seconds](#) or [UTM](#).

Zoom to CA county:

Text Search of map: Search...

Message from webpage

Please right click on your final point to close the field. Remember: Field must be drawn in a clockwise direction.

OK

12/10/2015 12:08:44 PM

500 feet 100 m

© 2015 Microsoft Corporation © 2015 HERE

Drawing mode is now on.

Left click to begin drawing boundaries of field.

Draw field clockwise.
Right click to close field.

MAPPING FUNCTIONS – DRAW FIELD

Continue to left click clockwise to draw field.

Mapping Functions:
☒ Show instruction pop-ups?
Please right click on your final point to close the field
Drawing Mode ON Clear Map
Please pin in "clockwise" direction.
Show existing pins for 2016
☐ Show only my org's pins?
☐ Show GOZ?
Show Pins
Find Pin by #
Find
Radius:
Units: ☒ Miles ☐ Kilometers
Draw Radius
Yard Stick
Zoom to Coordinates *
Latitude:
Longitude:
Zoom to
* Value must be in decimal degrees. Click to convert [degrees minutes seconds](#) or [UTM](#).
Zoom to CA county:
Select county...
Text Search of map:
Search...

Category
Select...
Variety

Crop
Select...
Status
Pushed
Type
Select...
Acres

Class
Select...
Date Planted

Last Harvest
2016
Pin Field
Comments: (only seen by your org)

12/10/2015
12:08:44 PM

MAPPING FUNCTIONS – DRAW FIELD

When you get to the final point, right click to close the polygon.

Mapping Functions:
☒ Show instruction pop-ups?
Please right click on your final point to close the field
Drawing Mode OFF Clear Map
Please pin in "clockwise" direction.
Show existing pins for 2016
☐ Show only my org's pins?
☐ Show GOZ?
Show Pins
Find Pin by #
Find
Radius:
Units: ☒ Miles ☐ Kilometers
Draw Radius
Yard Stick
Zoom to Coordinates*
Latitude:
Longitude:
Zoom to
* Value must be in decimal degrees. Click to convert [degrees minutes seconds](#) or [UTM](#).
Zoom to CA county:
Select county...
Text Search of map:
Search...


Category
Select...
Variety

Comments: (only seen by your org)

Crop
Select...
Status
Pushed
Acres

Type
Select...
Date Planted

Class
Select...
Last Harvest
2016
Pin Field



MAPPING FUNCTIONS – EDIT FIELD

[Table of Contents](#)

Mapping Functions:

☒ Show instruction pop-ups?

Please right click on your final point to close the field

Drawing Mode OFF **Clear Map**

Please pin in "clockwise direction."

Show existing pins for 2016 ☐ Show only my org's pins? ☐ Show GOZ?

Find Pin by #

Radius:

Units: ☒ Miles ☐ Kilometers

Zoom to Coordinates*:

Latitude:

Longitude:

* Value must be in decimal degrees. Click to convert [degrees minutes seconds](#) or [UTM](#).

Zoom to CA county:

Text Search of map:

Category: Crop: Type: Class: Last Harvest: 2016

Variety: Status: Pushed Acres: Date Planted:

Comments: (only seen by your org)

Map showing a blue field. A red arrow points from the "Clear Map" button to the field. Another red arrow points from the "Pin Field" button to the field. A third red arrow points from the "Pin Field" button to the map area.

Map controls:

MAPPING FUNCTIONS – EDIT FIELD ERASE FIELD

[Table of Contents](#)

There are two ways to erase a field:

Mapping Functions:

- ☒ Show instruction pop-ups?
- Please right click on your final point to close the field
- Drawing Mode OFF **Clear Map**
- Please pin in "clockwise" direction.
- Show existing pins for 2016
- ☐ Show only my org's pins?
- ☐ Show SOZ?
- Show Pins**
- Find Pin by #
- Radius: 1 Kilometers
- Zoom to CA county: Select county...
- Text Search of map: Search...

Field Information:

- Category: Select...
- Crop: Select...
- Type: Select...
- Class: Select...
- Variety:
- Status: Pushed
- Acres:
- Date Planted:
- Last Harvest: 2016
- Pin Field

Comments: (only seen by your org)

Map Area:

- 12/10/2015 12:08:44 PM
- 500 feet 100 m
- © 2015 Microsoft Corporation © 2015 HERE

1. Select "Clear Map", field will erase automatically.

This will also hide all other pins showing on map. Click "Show Pins" to view other pins again.

2. Click on pink eraser, then click on field you want to erase and it will disappear.

MAPPING FUNCTIONS – EDIT FIELD

EDIT FIELD BOUNDARIES

[Table of Contents](#)

Mapping Functions:

☒ Show instruction pop-ups?

Please right click on your final point to close the field
Drawing Mode OFF Clear Map
Please pin in "clockwise" direction.

Show existing pins for 2016
☐ Show only my org's pins?
☐ Show GOZ?
Show Pins

Find Pin by #
Find

Radius:
Units: ☒ Miles ☐ Kilometers
Draw Radius

Yard Stick

Zoom to Coordinates*:
Latitude:
Longitude:
Zoom to

* Value must be in decimal degrees. Click to convert [degrees minutes seconds](#) or [UTM](#).

Zoom to CA county:
Select county...
Text Search of map:
Search...

Category: Select...
Crop: Select...
Type: Select...
Class: Select...
Last Harvest: 2016
Variety:
Status: Pushed
Acres:
Date Planted:
Pin Field

Comments: (only seen by your org)

12/10/2015 2:08:44 PM

1. Click on pencil to edit boundaries of field.

2. After clicking on pencil, click on field you would like to edit boundaries of. White dots around border will appear, click and drag white dots to redraw boundaries of field.

MAPPING FUNCTIONS – EDIT FIELD

EDIT FIELD BOUNDARIES

Mapping Functions:

☒ Show instruction pop-ups?

Please right click on your final point to close the field

Drawing Mode OFF Clear Map

Please pin in "clockwise" direction.

Show existing pins for 2016

☐ Show only my org's pins?
☐ Show GOZ?
Show Pins

Find Pin by #

Find

Radius:

Units: ☒ Miles ☐ Kilometers

Draw Radius

Yard Stick

Zoom to Coordinates*:

Latitude:
Longitude:
Zoom to

* Value must be in decimal degrees. Click to convert [degrees minutes seconds](#) or [UTM](#).

Zoom to CA county:

Select county...

Text Search of map:

Search...

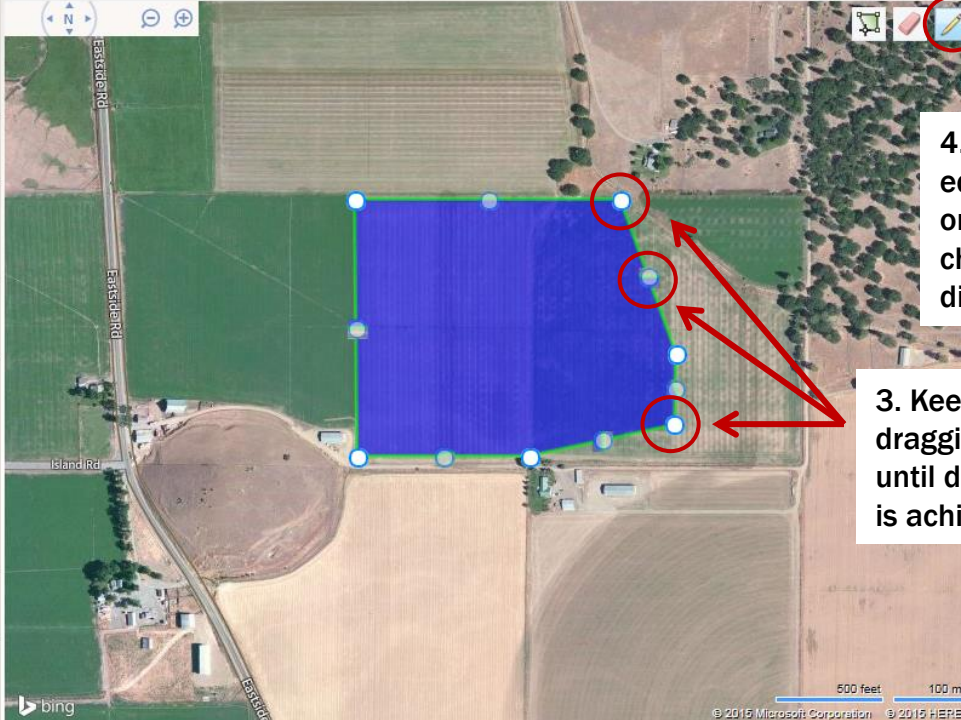
Category:
Crop:
Type:
Class:
Last Harvest: 2016
Variety:
Status: Pushed
Acres:
Date Planted:
Pin Field

Comments: (only seen by your org)

12/10/2015 2:08:44 PM

4. Once you are done editing boundaries, click on pencil to finalize changes- white dots will disappear.

3. Keep clicking and dragging any white dot until desired field boundary is achieved.



MAPPING FUNCTIONS – PINNING MENU

[Table of Contents](#)

Mapping Functions:

☒ Show instruction pop-ups?

Please right click on your final point to close the field

Drawing Mode OFF Clear Map

Please pin in "clockwise" direction.

Show existing pins for 2016 ▾

☐ Show only my org's pins?
☐ Show GOZ?
Show Pins

Find Pin by #
Find

Radius:
Units: ☒ Miles | ☐ Kilometers
Draw Radius

Yard Stick

Zoom to Coordinates *
Latitude:
Longitude:
Zoom to

* Value must be in decimal degrees. Click to convert [degrees minutes seconds](#) or [UTM](#).

Zoom to CA county:
Select county... ▾

Text Search of map:
Search... ?

Category: Select... ▾ Crop: Select... ▾ Type: Select... ▾ Class: Select... ▾ Last Harvest: 2016 ▾

Variety: Status: Pushed ▾ Acres: Date Planted: Pin Field

Comments: (only seen by your org)

12/10/2015 12:08:44 PM

500 feet 100 m

© 2015 Microsoft Corporation © 2015 HERE

Enter field information in the pinning menu.

MAPPING FUNCTIONS – PINNING MENU

Select category from drop down menu.

- Conventional
- RR- Roundup Ready
- RR/RL- Roundup Ready/Reduced Lignin
- Organic
- APS

Select crop from drop down menu.

Select type from drop down menu.

Select class from drop down menu.

Indicate year of planned last harvest.

Category

Select... ▼

Variety

Comments: (only seen by your org)

Enter variety name.

Only your company sees these comments.

Crop

Select... ▼

Status

Pushed ▼

Choose status of pin from drop down menu.

- “Pushed”- intend to plant here.
- “Signed”- you have signed contract and field is planted.

Type

Select... ▼

Acres

Enter number.

Class

Select... ▼

Date Planted

Date field was/will be planted.

Last Harvest

2016 ▼

Pin Field

Click “Pin Field” to submit and pin field.

MAPPING FUNCTIONS – PINNING MENU

FIELD VIOLATIONS

[Table of Contents](#)

The map is programmed to measure the distance between pinned fields. A warning is displayed if you pin a field within isolation of another field, according the following chart:

		Seed			
		Conventional	APS	Organic	GE
Seed	Conventional	crop standard	2 miles	2 miles	3 miles
	APS	2 miles	crop standard	crop standard	5 miles
	Organic	2 miles	crop standard	crop standard	5 miles
	GE	3 miles	5 miles	5 miles	crop standard

		Hay			
		Conventional	APS	Organic	GE
Seed	Conventional	crop standard	crop standard	crop standard	crop standard
	APS	2 miles	crop standard	crop standard	2 miles
	Organic	2 miles	crop standard	crop standard	2 miles
	GE	crop standard	crop standard	crop standard	crop standard

To view crop standards, click [here](#).

MAPPING FUNCTIONS – PINNING MENU FIELD VIOLATIONS

Example: You attempt to pin an Organic seed field within isolation distance of a Conventional seed field already pinned on the map.

• **WARNING** This field violates the isolation standards of the Alfalfa Seed Stewardship Program for the following pin(s):

Pin ID: 17709, Conventional Seed field within 2 miles
Pin ID: 17706, Conventional Seed field within 2 miles

If you choose to continue pinning this field, all parties involved will be notified via email

Category	Crop	Type	Class	Last Harvest
Organic ▼	Seed ▼	Synthetic ▼	Certified ▼	2019 ▼
Variety	Status	Acres	Date Planted	
test	Signed ▼	30	9/28/2015	

Comments: (only seen by your org)

Pin Field with violation
Cancel pin action

If you choose to pin the field, all parties involved will be notified via email.

Choose to either pin with violation or cancel the pin and choose a new field.

MAPPING FUNCTIONS - PINNING MENU

PIN FIELD

[Table of Contents](#)

- After you click “Pin Field” a message at the top of the pinning menu will read “Field successfully pinned. Pin ID: #”.
- You only need to click the “Pin Field” button once. If you click it more than once multiple pins will be pinned on the same field resulting in duplicate charges.

Field has been successfully pinned. Pin ID # is displayed.

Field successfully pinned. Pin ID: 17893

Category <input type="text" value="Select..."/>	Variety <input type="text"/>	Male Color <input type="text" value="Select..."/>	Trait Package <input type="text"/>	Acres <input type="text"/>
Company Contact Name: <input type="text" value="Ashley Koala"/> Phone: <input type="text" value="530-752-9828"/>	Status <input type="text" value="Proposed"/>	Date Planted <input type="text"/>		
Comments: (only seen by your org) <div><div></div><div></div></div>				

Pin Field

Only click “Pin Field” once.

MAPPING FUNCTIONS – DRAW RADIUS

[Table of Contents](#)

You may draw a radius to find if any field is within isolation of your existing field or where you would like to pin your field.

Type in radius distance you would like to verify. Select Miles or Kilometers. Click "Draw Radius".

Mapping Functions:

☒ Show instruction pop-ups?

Please right click on your final point to close the field

Drawing Mode OFF Clear Map

Please pin in "clockwise" direction.

Show existing pins for 2016

☐ Show only my org's pins?

☒ Show GOZ?

Show Pins

Find Pin by #

Find

Radius: 1

Units: ☒ Miles ☐ Kilometers

Draw Radius

Yard Stick

Zoom to Coordinates:

Latitude:

Longitude:

Zoom to

* Value must be in decimal degrees. Click to convert [degrees](#) [minutes seconds](#) or [UTM](#).

Zoom to CA county:

Select county...

Text Search of map:

Search...

Category: Select...

Variety:

Crop: Select...

Status: Pushed

Type: Select...

Acres:

Class: Select...

Date Planted:

Last Harvest: 2016

Pin Field

Comments: (only seen by your org)

Message from webpage

Please right click on the map at the center of your radius. Click "Draw Radius" again to cancel circle drawing.

OK

Simulated Data

bing

2000 feet 500 m

© 2015 Microsoft Corporation © 2015 HERE

Pop-up reminds you to right click at the center of your requested radius.

MAPPING FUNCTIONS – DRAW RADIUS

Click on “Clear Map” to remove blue circles. Pins will be removed also, click on “Show Pins” to view pins again.

Mapping Functions:

☒ Show instruction pop-ups?

Please right click on your final point to close the field.

Drawing Mode OFF **Clear Map**

Please pin in "clockwise direction."

Show existing pins for 2016 ▾

☐ Show only my org's pins?

☒ Show GOZ?

Show Pins

Find Pin by #

Find

Radius: 1

Units: ☒ Miles ☐ Kilometers

Draw Radius

Coordinates*:

Longitude:

Zoom to

* Value must be in decimal degrees. Click to convert [degrees](#) [minutes seconds](#) or [UTM](#).

Zoom to CA county:

Text Search of map:

Search...

Category: Select... ▾

Variety:

Comments: (only seen by your org)

Category: Select... ▾

Crop: Select... ▾

Status: Pushed ▾

Type: Select... ▾

Acres:

Class: Select... ▾

Date Planted:

Last Harvest: 2016 ▾

Pin Field

Simulated Data

bing

1 mile radius was selected.

Right clicking on all four corners of this field drew a blue circle with a 1 mile radius each time. This shows every field within a 1 mile radius of this field.

MAPPING FUNCTIONS – YARD STICK

[Table of Contents](#)

You can measure the distance between fields in miles.

The screenshot displays the mapping application's interface. On the left, the 'Mapping Functions' panel includes several sections: 'Show instruction pop-ups?' (checked), 'Please right click on your final point to close the field' (with 'Drawing Mode OFF' and 'Clear Map' buttons), 'Show existing pins for 2016' (with checkboxes for 'Show only my org's pins?' and 'Show GOZ?'), 'Find Pin by #' (with a 'Find' button), 'Radius' (with 'Miles' selected), and 'Yard Stick' (highlighted with a red circle and an arrow). Below this is the 'Zoom to Coordinates' section with latitude and longitude input fields. At the bottom is the 'Text Search of map' section with a search bar. The main map area shows an aerial view of fields with several yellow crosshair markers. A 'Message from webpage' pop-up is centered over the map, containing a warning icon and the text: 'Please right click on the points you wish to include in your distance measurement. Click "Yard Stick" again to cancel measurement taking.' A red arrow points from the 'Yard Stick' button to this pop-up. The top of the interface features dropdown menus for 'Category', 'Crop', 'Type', 'Class', and 'Last Harvest' (set to 2016), along with input fields for 'Variety', 'Status' (set to 'Pushed'), 'Acres', and 'Date Planted'. A 'Pin Field' button is also present. The bottom right corner shows a scale bar (1000 feet / 250 m) and copyright information for Microsoft and HERE.

Mapping Functions:

☒ Show instruction pop-ups?

Please right click on your final point to close the field

Drawing Mode OFF Clear Map

Please pin in "clockwise" direction.

Show existing pins for 2016

☐ Show only my org's pins?

☒ Show GOZ?

Show Pins

Find Pin by #

Find

Radius:

Units: ☒ Miles ☐ Kilometers

Draw Radius

Yard Stick

Zoom to Coordinates:

Latitude:

Longitude:

Zoom to CA county:

Select county...

Text Search of map:

Search...

Category: Select... Crop: Select... Type: Select... Class: Select... Last Harvest: 2016

Variety: Status: Pushed Acres: Date Planted: Pin Field

Comments: (only seen by your org)

Message from webpage

Please right click on the points you wish to include in your distance measurement. Click "Yard Stick" again to cancel measurement taking.

OK

Simulated Data

bing

1000 feet 250 m

© 2015 Microsoft Corporation © 2015 HERE

Click "Yard Stick" to measure distance between fields.

Pop-up reminds you to right click on the point you wish to include in your distance. Click on "Yard Stick" again to cancel measurement taking.

MAPPING FUNCTIONS – YARD STICK

Click on “Clear Map” to remove red line. Pins will be removed also, click on “Show Pins” to view pins again.

Mapping Functions:

☒ Show instruction pop-ups?

Please right click on your final point to close the field.
Drawing Mode OFF **Clear Map**

Please pin in "clockwise direction."

Show existing pins for 2016 ▾

☐ Show only my org's pins?

☒ Show GOZ?

Show Pins

Find Pin by #
Find

Radius:
Units: ☒ Miles | ☐ Kilometers
Draw Radius

0.534 miles Yard Stick

Zoom to Coordinates:
Latitude:
Longitude:

be in decimal degrees. Click to convert [degrees minutes seconds](#) or [UTM](#).

Zoom to CA county:
Select county... ▾

Text Search of map:
Search...

Category: Select... ▾
Variety:

Crop: Select... ▾
Status: Pushed ▾

Type: Select... ▾
Acres:

Class: Select... ▾
Date Planted:

Last Harvest: 2016 ▾
Pin Field

Comments: (only seen by your org)

12/10/2015 2:01:57 PM

Simulated Data

bing

© 2015 Microsoft Corporation © 2015 HERE

Distance in miles is displayed here.

Red line indicates where distance was measured between.

EDITING YOUR PINS

[Table of Contents](#)

Home Certification Programs Crop Isolation Mapping Members Only Agricultural Commissioners CCIA Staff Only

View Map Your Pins Renewals

akoala@ucdavis.edu | [Logout](#)

Mapping Functions:

☒ Show instruction pop-ups?

Please right click on your final point to close the field

Drawing Mode OFF Clear Map

Please pin in "clockwise" direction.

Show existing pins for 2016

☐ Show only my org's pins?

☒ Show GOZ?

Show Pins

Find Pin by #

Find

Radius:

Units: ☒ Miles ☐ Kilometers

Draw Radius

Yard Stick

Zoom to Coordinates *

Latitude:

Longitude:

Zoom to

* Value must be in decimal degrees. Click to [convert degrees minutes seconds](#) or [UTM](#).

Zoom to CA county:

Select county...

Text Search of map:

Search...

Category: Select... Crop: Select... Type: Select... Class: Select... Last Harvest: 2016

Variety: Status: Pushed Acres: Date Planted: Pin Field

Comments: (only seen by your org)

View Map Your Pins Renewals

12/10/2015 2:11:53 PM

Click on "Your Pins" to view a list of your pins.

EDITING YOUR PINS

All pins are assigned a unique number (ID) in the order they are entered – no matter which company enters the pin. Your pin list will not have sequential numbers.

Enter pin ID to search for a specific pin.

Sort table by clicking on any of the headers.

Home | Certification Programs | Crop Isolation Mapping | Members Only | Agricultural Commissioners | CCIA Staff Only

View Map | Your Pins | Renewals

akoala@ucdavis.edu | [Logout](#)

Find Pin: Leave blank to find all pins for given year

Show pins for: 2016 ▼

	ID	Crop	Category	Variety	Type	Status	Acres	Date Planted	Date Entered	Last Harvest
Select	17708	Alfalfa	Organic	test	Hay	Signed	60.00	10/13/2015	10/23/2015	2020
Select	17706	Alfalfa	Conventional	test	Synthetic	Inactive	30.00	10/8/2014	10/23/2015	2019
Select	17707	Alfalfa	RR/RL	test	Hybrid	Signed	45.00	11/12/2014	10/23/2015	2019

Choose which crop year you would like to see pins for.

Click "Select" to edit pin information.

EDITING YOUR PINS

After selecting a pin to edit, your screen will look like this:

akoala@ucdavis.edu | [Logout](#)

Find Pin: Leave blank
to find all pins for given year

Show pins for: 2016 ▼

ID: 17706
Crop: Alfalfa
Genus: Medicago
Variety: test
Category: Conventional ▼
Crop: Seed ▼
Type: Synthetic ▼
Class: Certified ▼
Status: Inactive ▼
Acres: 30.00
Last Harvest Year: 2019
Date Planted: 10/8/2014
Date Entered: 10/23/2015 9:56:28 AM
Has this pin been renewed?: ☐
Original Pin Year:
Previous Year's pin:
Comments:

[View Field](#)

[Update](#)

[Cancel/Clear Selection](#)

If you change the status of a pin to "inactive", the pin will be immediately canceled and then removed from the map after 60 days.

If the status is changed to "inactive" prior to 11:00 pm of the initial pinning date, there will be no fee charged.

Only white boxes can be edited.

"Select" was clicked for editing this pins information.

	ID	Crop	Category	Variety	Type	Status	Acres	Date Planted	Date Entered	Last Harvest
Select	17708	Alfalfa	Organic	test	Hay	Signed	60.00	10/13/2015	10/23/2015	2020
Select	17706	Alfalfa	Conventional	test	Synthetic	Inactive	30.00	10/8/2014	10/23/2015	2019
Select	17707	Alfalfa	RR/RL	test	Hybrid	Signed	45.00	11/12/2014	10/23/2015	2019

CONTACT US

[Table of Contents](#)

For more information or assistance,
please contact:

Timothy Blank

Email: tjblank@ucdavis.edu

Phone: 530-754-4854

If Timothy is not available, call
the main office:

530-752-0544