

TREASURE VALLEY SWEET CORN ISOLATION MAP



TABLE OF CONTENTS

Click on any item below to jump to that section

- ❖ [Purpose and Background](#)
- ❖ [Log In](#)
- ❖ [Confidentiality Agreement](#)
- ❖ [Initial Page- Mapping Functions](#)
 - ❖ [Zooming to a Location](#)
 - ❖ [Show Pop-ups](#)
 - ❖ [Show Pins](#)
 - ❖ [Draw Field](#)
 - ❖ [Edit Field](#)
 - ❖ [Erase Field](#)
 - ❖ [Edit Field Boundaries](#)
 - ❖ [Pinning Menu](#)
 - ❖ [Field Violations](#)
 - ❖ [Pin Field](#)
 - ❖ [Draw Radius](#)
 - ❖ [Yard Stick](#)
- ❖ [Editing Your Pins](#)
- ❖ [Contact Us](#)

PURPOSE AND BACKGROUND

[Table of Contents](#)

■ Purpose

- To facilitate communication and sharing of field information between companies producing GMO and non-GMO sweet corn in order to prevent isolation conflicts.

■ Background

- Certain functions of the map can be updated as needs of the industry change (i.e. changing isolation distance, allowing fields to be pinned with conflicts, adding/removing field information, etc.)
- Users must annually sign a confidentiality agreement
- Fee: see website for current fees (fee voided if pin changed to “inactive” before 6 days)

LOGIN

[Table of Contents](#)

To login, click on “Go to the map”.

Treasure Valley Sweet Corn - Idaho

This map is maintained for the Treasure Valley Idaho corn growers.

[Go to the
map](#)

[Treasure Valley Sweet Corn Isolation Map tutorial](#) (pdf)

Billing information: Click to login.

1. Treasure Valley sweet corn pins are billed after 6 days.
2. If the status of a pin is changed to "inactive" prior to 6 days there will be no charge for the pin.
3. Inactive pins are deleted immediately.

LOGIN

Login to the map using your email address and self-selected password.

| | | | | | |
|------|------------------------|------------------------|--------------|----------------------------|-----------------|
| Home | Certification Programs | Crop Isolation Mapping | Members Only | Agricultural Commissioners | CCIA Staff Only |
|------|------------------------|------------------------|--------------|----------------------------|-----------------|

View Map

Log In

User Name:

Password:

Log In

- Permissions are assigned to a company by the CCIA. Contact us at 530-752-0544 if your company is not already in our database.
- Permissions are assigned to an individual by a company representative adding a “New Employee” to their account using the CCIA website section “Update Company Profile” under the “Members Only” page. To login to update your company profile, you must use your organization ID number and assigned password.

REPRESENTATION OF INTENT AND CONFIDENTIALITY AGREEMENT

[Table of Contents](#)

The CCIA requires users of the Treasure Valley Sweet Corn Isolation Map to accept this agreement before access to the map is granted. The agreement will appear the first time a user attempts to access the map after January 1st of each year.

Representation of Intent and Confidentiality Agreement

WHEREAS, the CCIA operates an online mapping program available for seed production applicants. In order to minimize the risk of unintended pollen flow between fields, a specified distance between fields is required. It would be of benefit to the seed industry if seed production applicants mark their fields on an online map operated by the CCIA. Seed companies need to establish appropriate isolation distances between fields. Seed companies and Seed Certifying Agencies will be given access to the online mapping system.

WHEREAS, because of the confidentiality issues relative to seed production, applicant's information, as well as the undersigned's access to other seed companies' information via the mapping system, the CCIA requires that any representative granted access to the mapping system must sign this representation of intent and confidentiality agreement.

WHEREAS, the undersigned representative desires to maintain in confidence all proprietary and trade secret information obtained from the CCIA, its officers, directors, employees, agents, or contractors, including but not limited to information obtained from access to the CCIA's mapping system.

NOW THEREFORE, in consideration of the mutual covenants set forth herein and for other good and valuable consideration, the receipt and adequacy of which is hereby acknowledged, the parties hereto agree as follows:

1. The undersigned agrees that any and all information which is provided to the undersigned in whatever form by the CCIA or its officers, directors, employees, agents, or contractors, including but not limited to information obtained via access to the CCIA's online mapping system, is confidential, proprietary and trade secret information of seed producers and shall not be disclosed by the undersigned to any third party except as specifically authorized by the CCIA. The undersigned represents and warrants that it is not his/her intent to use the information obtained from the CCIA's mapping system to engage in any anticompetitive behavior with other seed companies or for seed production applicants and that he/she will not do so. Only the representative signing this Agreement may have access to the mapping system and he/she may not share his/her password with anyone else. Permissions to use/view the CCIA's mapping system may be revoked if the terms of this agreement are violated.
2. The undersigned agrees to indemnify and hold the CCIA and its officers, directors, employees, agents and representatives (collectively "CCIA") harmless and render the CCIA an immediate defense, including retention of legal counsel of the CCIA's choice, against any and all liabilities, losses, costs, damages, attorneys' fees and other expenses which the CCIA may incur or sustain as a consequence of the undersigned's breach of this Agreement.
3. If an action at law or in equity is necessary to enforce or interpret the terms of this Agreement, the prevailing party shall be entitled to recover its reasonable attorneys' fees and costs from the non-prevailing party in addition to any other reasonable relief to which it may be entitled. With respect to any suit, action or proceeding arising out of or relating to this Agreement, or the documentation related hereto, the parties hereby submit to the jurisdiction and venue of the appropriate court in the County of Yolo, State of California.
4. The covenants and agreements contained in this Agreement shall be binding upon and shall inure to the benefit of the heirs, successors and assigns of the parties hereto.
5. No change, amendment or modification of this Agreement shall be valid unless in writing and signed by the parties hereto.
6. This Agreement shall be construed and governed pursuant to the laws of the State of California.

Login: akoala@ucdavis.edu
Name: Ashley Koala
Company: CCIA Milling Co.

☒ I agree to the Representation of Intent and Confidentiality Agreement

☐ I do not agree to the Representation of Intent and Confidentiality Agreement (you will be logged out of the system)

You *must* accept the agreement in order to gain access.

INITIAL PAGE – MAPPING FUNCTIONS

[Table of Contents](#)

The initial page is this map of Treasure Valley.

Mapping functions are on the left side of the map.

Mapping Functions:
☒ Show instruction pop-ups?
Please right click on your final point to close the field
Drawing Mode OFF Clear Map
Please pin in "clockwise" direction.
Show existing pins for 2016
☐ Show only my org's pins?
Show Pins
Find Pin by #
Find
Radius:
Units: ☒ Miles ☐ Kilometers
Draw Radius
Yard Stick
Zoom to Coordinates *
Latitude:
Longitude:
Zoom to
* Value must be in decimal degrees. Click to convert [degrees minutes seconds](#) or [UTM](#).
Text Search of map:
Search...

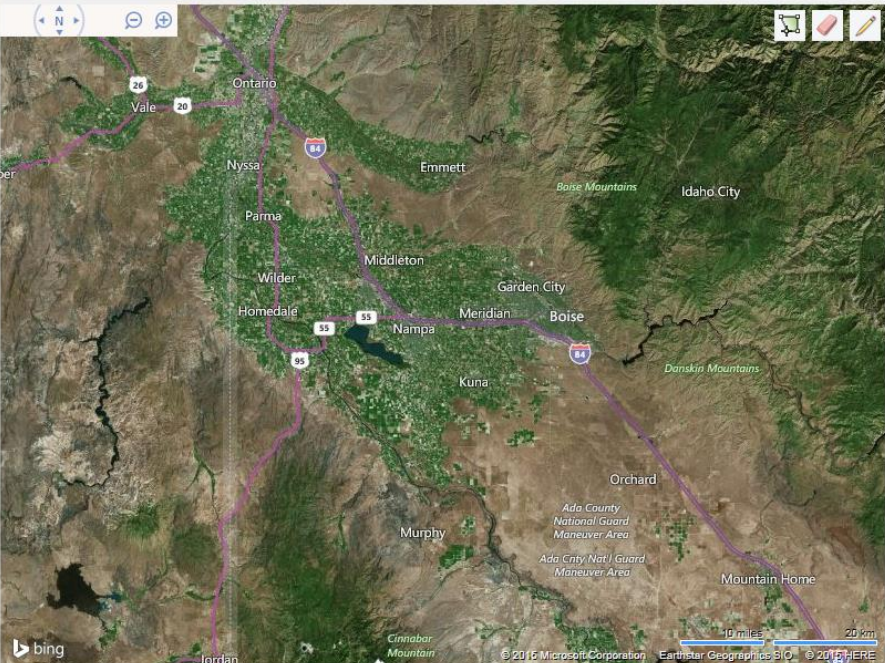
Category
Select...
Company Contact
Name:
Phone:
Variety

Status
Proposed
Male Color
Select...
Date Planted

Trait Package

Acres

Pin Field
Comments: (only seen by your org)


12/11/2015 10:39:04 AM

MAPPING FUNCTIONS – ZOOMING TO A LOCATION

[Table of Contents](#)

Zoom to the location of your choice in several different ways:

1. Enter latitude & longitude of desired location; the map will place this location in the center of the screen.

2. Enter text for any location that may be noted on the map (city, national park, etc.).

Mapping Functions:

☒ Show instruction pop-ups?

Please right click on your final point to close the field

Drawing Mode OFF | Clear Map

Please pin in "clockwise" direction.

Show existing pins for 2016

☐ Show only my org's pins?

Show Pins

Find Pin by #

Radius:

Units: ☒ Miles ☐ Kilometers

Draw Radius

Zoom to Coordinates:

Latitude:

Longitude:

Zoom to

* Value must be in decimal degrees. Click to convert [degrees](#) [minutes seconds](#) or [UTM](#).

Text Search of map:

Search... ?

Category: Select... Variety: Male Color: Select... Trait Package: Acres: Pin Field

Company Contact

Name: Proposed Status: Date Planted: Comments: (only seen by your org)

Comments: (only seen by your org)

3. Point to a specific area on the map and double click repeatedly or use the mouse roller.

4. Use Shift + hold click to draw a square on the map. Let go of mouse, click to zoom.

Move the viewable area by clicking and dragging the mouse.

MAPPING FUNCTIONS – SHOW POP-UPS

[Table of Contents](#)

Mapping Functions:

☒ Show instruction pop-ups?

Please right click on your final point to close the field

Drawing Mode OFF

Clear Map

Please pin in "clockwise" direction.

Show existing pins for 2016 ▼

☐ Show only my org's pins?

Show Pins

Find Pin by

Find

Radius:

Units: ☒ Miles | ☐ Kilometers

Draw Radius

Yard Stick

Zoom to Coordinates *

Latitude:

Longitude:

Zoom to

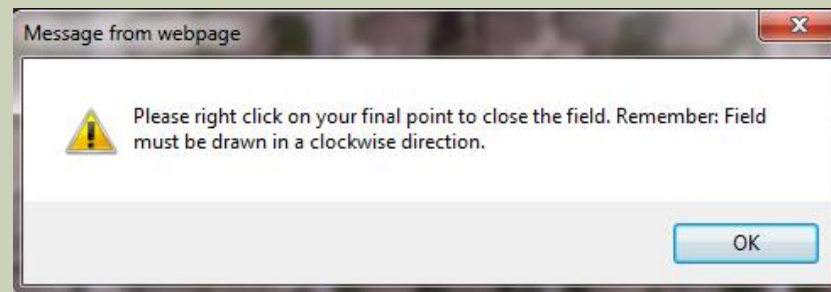
* Value must be in decimal degrees. Click to convert [degrees](#) [minutes seconds](#) or [UTM](#).

Text Search of map:

?

Search...

The map is programmed with helpful pop-up instructions like this:



As you become more familiar with the mapping functions, you may choose to turn off instruction pop-ups.

MAPPING FUNCTIONS – SHOW PINS

[Table of Contents](#)

Mapping Functions:

☒ Show instruction pop-ups?

Please **right click** on your final point to close the field

Drawing Mode OFF

Clear Map

Please pin in "clockwise" direction.

Show existing pins for 2016 ▼

☐ Show only my org's pins?

Show Pins

Find Pin by #

Find

Radius:

Units: ☒ Miles | ☐ Kilometers

Draw Radius

Yard Stick

Zoom to Coordinates*:

Latitude:

Longitude:

Zoom to

* Value must be in decimal degrees. Click to convert [degrees](#) [minutes](#) [seconds](#) or [UTM](#).

Text Search of map:



Search...

If there are a lot of pins on the map, depending on your connection speed, it may take a minute or more for the pins to show. If it is taking a while to map the pins, be patient and wait for the pins to show.

Click button "Show Pins" to show all pins.

If you zoom to a specific location and show pins, when you zoom out you will continue to see only the pins that showed in the zoomed screen.

Tip: Zoom to show a large area of interest, click "Show Pins", then as you zoom in and out all pins will continue to show.

MAPPING FUNCTIONS – SHOW PINS

All pins will be displayed; different colors for different designations.

Mapping Functions:

☒ Show instruction pop-ups?

Please right click on your final point to close the field

Drawing Mode OFF Clear Map

Please pin in "clockwise" direction.

Show existing pins for 2016

☐ Show only my org's pins?

Show Pins

Find Pin by #

Radius:

Units: ☒ Miles ☐ Kilometers

Draw Radius

Yard Stick

Zoom to Coordinates*

Latitude:

Longitude:

Zoom to

* Value must be in decimal degrees. Click to convert [degrees](#) [minutes seconds](#) or [UTM](#).

Text Search of map:

Search...

Category: Select... Variety: Status: Proposed Male Color: Select... Date Planted: Trait Package: Acres: Pin Field

Name: Phone: Comments: (only seen by your org)

Examples:

- ▼ Non-GMO nursery pinned by your company
- ▼ Non-GMO nursery pinned by other company
- ▼ GMO seed/commercial pinned by your company
- ▼ GMO seed/commercial pinned by other company

- YOUR pins will be yellow or outlined in yellow.
- Pins for ALL other companies will be purple or outlined in purple.

MAPPING FUNCTIONS – SHOW PINS

Zooming in shows actual field location and boundaries of the field.

akoala@ucdavis.edu | [Logout](#)

Mapping Functions:

☒ Show instruction pop-ups?

Please right click on your final point to close the field

Please pin in "clockwise" direction.

Show existing pins for 2016 ▼

☐ Show only my org's pins?

Find Pin by #

Radius:

Units: ☒ Miles | ☐ Kilometers

Zoom to Coordinates*

Latitude:

Longitude:

* Value must be in decimal degrees. Click to convert [degrees](#) [minutes seconds](#) or [UTM](#).

Text Search of map:

Category: Select... Variety: Male Color: Select... Trait Package: Acres:

Company Contact: Status: Proposed Date Planted:

Comments: (only seen by your org)

12/15/2015 12:02:15 PM

Pin ID 17764

Cmp: CCIA Milling Co.
Nm: Ashley Koala
Pn: 530-752-9828
Crp: Corn
Var: test
Pl dt: 03/09/16
Cult: GMO seed
Ml Clr: White
Status: Proposed
Pin dt: 11/02/15
Comments:

Simulated Data

bing

© 2015 Microsoft Corporation © 2015 HERE

Mouse-over a yellow pin (your company) to view detailed field information:

- Pin ID
- Company
- Contact Name
- Contact Number
- Crop
- Variety
- Date Planted
- Cultivation Category
- Male Color
- Status
- Date Pinned
- Comments

MAPPING FUNCTIONS – SHOW PINS

Zooming in shows actual field location and boundaries of the field.

akoala@ucdavis.edu | [Logout](#)

Mapping Functions:

☒ Show instruction pop-ups?

Please right click on your final point to close the field

Drawing Mode OFF Clear Map

Please pin in "clockwise" direction.

Show existing pins for 2016 ▾

☐ Show only my org's pins?

Show Pins

Find Pin by #

Find

Radius:

Units: ☒ Miles ☐ Kilometers

Draw Radius

Yard Stick

Zoom to Coordinates:

Latitude:

Longitude:

Zoom to

* Value must be in decimal degrees. Click to convert [degrees minutes seconds](#) or [UTM](#).

Text Search of map:

?

Search...

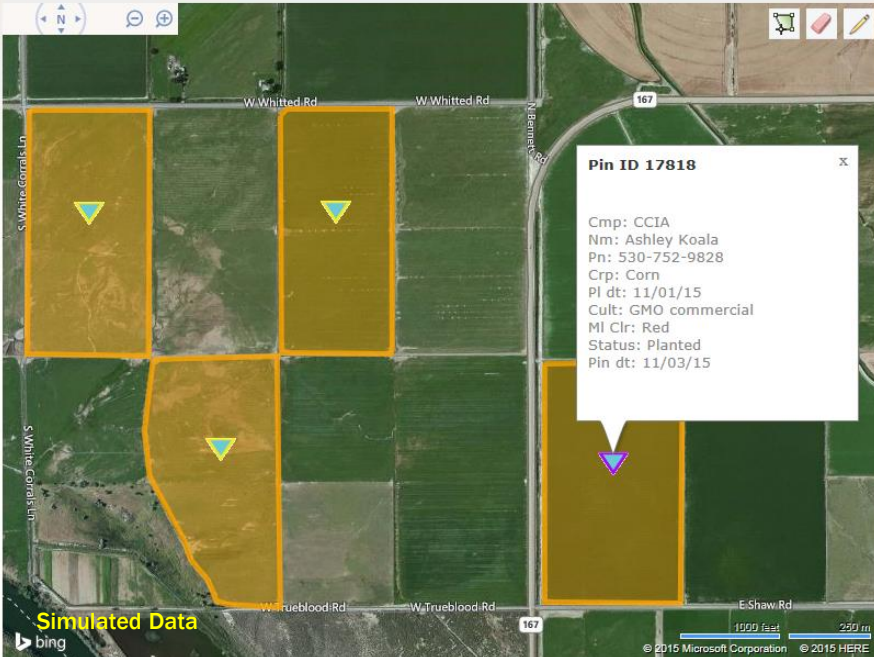
Category: Variety: Male Color: Trait Package: Acres:

Company Contact: Status: Date Planted:

Name: Phone:

Comments: (only seen by your org)

Pin Field



The map displays a rural area with several fields outlined in orange. A purple pin is located in the bottom right field. The map includes a scale bar (1000 feet / 200 m) and a copyright notice for 2015 Microsoft Corporation and HERE.

Pin ID 17818

Cmp: CCIA
Nm: Ashley Koala
Pn: 530-752-9828
Crp: Corn
Pl dt: 11/01/15
Cult: GMO commercial
MI Clr: Red
Status: Planted
Pin dt: 11/03/15

Simulated Data

Mouse-over a purple pin (other company) to view detailed field information:

- Pin ID
- Company
- Contact Name
- Contact Number
- Crop
- Date Planted
- Cultivation Category
- Male Color
- Status
- Date Planted

(Everything, but variety and comments.)

MAPPING FUNCTIONS – DRAW FIELD

[Table of Contents](#)

Zoom to field you plan to pin.

Mapping Functions:

☒ Show instruction pop-ups?

Please right click on your final point to close the field

Drawing Mode OFF Clear Map

Please pin in "Clockwise" direction.

Show existing pins for 2016 ☐ Show only my org's pins?

Show Pins

Category: Select... Variety: Varieties Company Contact: Name: Phone: Status: Proposed Male Color: Select... Date Planted: Trait Package: Acres: Pin Field

Comments: (only seen by your org)

12/10/2015 3:16:09 PM

After zoomed in to field, click on "Drawing Mode OFF" or on the green polygon icon to turn on the ability to mark boundaries of field you plan to pin.

Longitudes: Zoom to

* Value must be in decimal degrees. Click to convert [degrees minutes seconds](#) or [UTM](#).

Text Search of map: Search...

bing

© 2015 Microsoft Corporation © 2015 HERE

MAPPING FUNCTIONS – DRAW FIELD

Mapping Functions:

☒ Show instruction pop-ups?

Please right click on your final point to close the field.
Drawing Mode ON Clear Map
Please pin in "clockwise" direction.

Show existing pins for 2016 ☐ Show only my org's pins?
Show Pins

Radius:
Units: ☒ Miles ☐ Kilometers

Zoom to Coordinates*:
Latitude:
Longitude:
Zoom to

* Value must be in decimal degrees. Click to convert [degrees minutes seconds](#) or [UTM](#).

Text Search of map:

Category: Variety: Male Color: Trait Package: Acres:
Company Contact: Status: Date Planted: Pin Field

Name: Phone: Comments: (only seen by your org)

12/10/2015 3:16:09 PM

Message from webpage

Please right click on your final point to close the field. Remember: Field must be drawn in a clockwise direction.

OK

bing

© 2015 Microsoft Corporation © 2015 HERE

Drawing mode is now on.

Left click to begin drawing boundaries of field.

Draw field clockwise. Right click to close field.

Continue to left click clockwise to draw field.

When you get to the final point, right click to close the polygon.

© 2015 Microsoft Corporation © 2015 HERE

MAPPING FUNCTIONS – EDIT FIELD

[Table of Contents](#)

Mapping Functions:

☒ Show instruction pop-ups?

Please right click on your final point to close the field

Drawing Mode OFF **Clear Map**

Please pin in "clockwise" direction.

Show existing pins for 2016

☐ Show only my org's pins?

Show Pins

Find Pin by #

Find

Radius:

Units: ☒ Miles ☐ Kilometers

Draw Radius

Yard Stick

Zoom to Coordinates*:

Latitude:

Longitude:

Zoom to

* Value must be in decimal degrees. Click to convert [degrees minutes seconds](#) or [UTM](#).

Text Search of map:

?

Search...

Category: Select... Variety: Male Color: Select... Trait Package: Acres:

Company Contact: Name: Status: Proposed Date Planted:

Phone:

Comments: (only seen by your org)

Pin Field

12/10/2015 16:09 PM

500 feet 100 m

© 2015 Microsoft Corporation © 2015 HERE

Note: You can only edit your field prior to clicking "Pin Field". Once you have pinned the field you can only delete and make the pin inactive from the ["Your Pins"](#) page.

If you made a mistake you can:

- Select "Clear Map" or click on the pink eraser to clear the field and start over.
- Click on the pencil to edit the boundaries of the field.

MAPPING FUNCTIONS – EDIT FIELD

ERASE FIELD

[Table of Contents](#)

There are two ways to erase a field:

The screenshot shows the 'Mapping Functions' panel on the left and a map on the right. The panel includes fields for Category, Variety, Male Color, Trait Package, Acres, Company Contact, Name, Status, Date Planted, Phone, and Comments. It also has checkboxes for 'Show instruction pop-ups?' and 'Show existing pins for', a 'Show Pins' button, and a 'Find Pins' section. A red circle highlights the 'Clear Map' button in the 'Mapping Functions' panel. Another red circle highlights a pink eraser icon on the map. A red arrow points from the 'Clear Map' button to the pink eraser icon. The map shows a grid of fields, with one field highlighted in blue. The map is labeled with 'bing' and '© 2015 Microsoft Corporation'.

1. Select "Clear Map", field will erase automatically. This will also hide all other pins showing on map. Click "Show Pins" to view other pins again.

2. Click on pink eraser, then click on field you want to erase and it will disappear.

MAPPING FUNCTIONS – EDIT FIELD

EDIT FIELD BOUNDARIES

[Table of Contents](#)

Mapping Functions:
☒ Show instruction pop-ups?
Please right click on your final point to close the field
Drawing Mode OFF Clear Map
Please pin in "clockwise" direction.
Show existing pins for 2016
☐ Show only my org's pins?
Show Pins
Find Pin by #
Find
Radius:
Units: ☒ Miles ☐ Kilometers
Draw Radius
Yard Stick
Zoom to Coordinates*:
Latitude:
Longitude:
Zoom to
* Value must be in decimal degrees. Click to convert [degrees minutes seconds](#) or [UTM](#).
Text Search of map:
Search...

Category
Select...
Company Contact
Name:
Phone:
Comments: (only seen by your org)

Category
Select...
Variety

Status
Proposed
Male Color
Select...
Date Planted

Trait Package

Acres

Pin Field

2/10/2015 1:16:09 PM
1. Click on pencil to edit boundaries of field.
2. After clicking on pencil, click on field you would like to edit boundaries of. White dots around border will appear, click and drag white dots to redraw boundaries of field.

MAPPING FUNCTIONS – EDIT FIELD

EDIT FIELD BOUNDARIES

Mapping Functions:
☒ Show instruction pop-ups?
Please right click on your final point to close the field
Drawing Mode OFF Clear Map
Please pin in "clockwise" direction.
Show existing pins for 2016
☐ Show only my org's pins?
Show Pins
Find Pin by #
Find
Radius:
Units: ☒ Miles ☐ Kilometers
Draw Radius
Yard Stick
Zoom to Coordinates*:
Latitude:
Longitude:
Zoom to
* Value must be in decimal degrees. Click to convert [degrees minutes seconds](#) or [UTM](#).
Text Search of map:
Search...

Category
Select...
Variety
Proposed
Male Color
Select...
Trait Package
Acres
Pin Field
Company Contact
Name:
Phone:
Status
Proposed
Date Planted

Comments: (only seen by your org)

12/10/2015 2:16:09 PM

500 feet 100 m

© 2015 Microsoft Corporation © 2015 HERE

4. Once you are done editing boundaries, click on pencil to finalize changes- white dots will disappear.

3. Keep clicking and dragging any white dot until desired field boundary is achieved.

MAPPING FUNCTIONS – PINNING MENU

[Table of Contents](#)

Mapping Functions:

☒ Show instruction pop-ups?

Please right click on your final point to close the field
Drawing Mode OFF Clear Map
Please pin in "clockwise" direction.

Show existing pins for 2016
☐ Show only my org's pins?
Show Pins

Find Pin by #
Find

Radius:
Units: ☒ Miles ☐ Kilometers
Draw Radius

Yard Stick

Zoom to Coordinates*
Latitude:
Longitude:
Zoom to
* Value must be in decimal degrees. Click to convert [degrees](#) [minutes](#) [seconds](#) or [UTM](#).

Text Search of map:
Search...

Category: Select...
Variety:
Male Color: Select...
Trait Package:
Acres:
Company Contact:
Name:
Phone:
Status: Proposed
Date Planted:
Comments: (only seen by your org)
Pin Field

12/10/2015

Enter field information in the pinning menu.

MAPPING FUNCTIONS – PINNING MENU

Select category from drop down menu.

- GMO seed
- GMO commercial
- Non-GMO nursery

Enter variety.

Select male color from drop down menu.

Enter trait package.

Enter acres.

Category

Select... ▼

Company Contact

Name:

Phone:

Comments: (only seen by your org)

Variety

Status

Proposed ▼

Male Color

Select... ▼

Date Planted

Trait Package

Acres

Pin Field

Choose status of pin from drop down menu.

- “Proposed”- expected to plant here.
- “Planted”- field is planted.

Enter date field was/will be planted.

Click “Pin Field” to submit and pin field.

Enter name and phone number of company contact.

Only your company sees these comments.

MAPPING FUNCTIONS – PINNING MENU FIELD VIOLATIONS

[Table of Contents](#)

- The map is programmed to measure distances between fields. A warning is displayed if you attempt to pin a GMO seed/commercial field within 1 mile of a Non-GMO nursery, or vice versa.
- To avoid conflicts, established Non-GMO nurseries should be pinned early in the year.

• **WARNING** This field violates the isolation standards of the Idaho Sweet Corn Program for the following pin(s):

- Pin ID: 17764, GMO seed field within 1 mile
- Pin ID: 17763, GMO seed field within 1 mile
- Pin ID: 17762, GMO seed field within 1 mile
- Pin ID: 17817, GMO commercial field within 1 mile
- Pin ID: 17816, GMO seed field within 1 mile

You may not place a pin in violation.

| | | | | |
|-------------------|---------|------------|---------------|-------|
| Category | Variety | Male Color | Trait Package | Acres |
| Non-GMO nursery ▼ | test | Yellow ▼ | test | 50 |

| | | |
|------------------------|-----------|--------------|
| Company Contact | Status | Date Planted |
| Name: Ashley Koala | Planted ▼ | 11/1/2015 |
| Phone: 530-752-9828 | | |

Comments: (only seen by your org)

Pin Field

Cancel pin action

You **must** cancel the pin and choose a new field. You **cannot** pin with a violation.

MAPPING FUNCTIONS - PINNING MENU

PIN FIELD

[Table of Contents](#)

- After you click “Pin Field” a message at the top of the pinning menu will read “Field successfully pinned. Pin ID: #”.
- You only need to click the “Pin Field” button once. If you click it more than once multiple pins will be pinned on the same field resulting in duplicate charges.

Field has been successfully pinned. Pin ID # is displayed.

Field successfully pinned. Pin ID: 17893

| | | | | |
|---|---------------------------------|--------------------------------------|---------------------------------------|-------------------------------|
| Category Select... ▼ | Variety <input type="text"/> | Male Color Select... ▼ | Trait Package <input type="text"/> | Acres <input type="text"/> |
| Company Contact Name: Ashley Koala Phone: 530-752-9828 | Status Proposed ▼ | Date Planted <input type="text"/> | | |
| Comments: (only seen by your org) <div><div></div><div>^</div><div>v</div></div> | | | | |

Pin Field

Only click “Pin Field” once.

MAPPING FUNCTIONS – DRAW RADIUS

[Table of Contents](#)

You may draw a radius to find if any field is within isolation of your existing field or where you would like to pin your field.

Type in radius distance you would like to verify. Select Miles or Kilometers. Click “Draw Radius”.

Mapping Functions:

☒ Show instruction pop-ups?

Please right click on your final point to close the field

Drawing Mode OFF Clear Map

Please pin in "clockwise" direction.

Show existing pins for 2016

☐ Show only my org's pins?

Show Pins

Find Pin by #

Find

Radius: 1

Units: ☒ Miles ☐ Kilometers

Draw Radius

Yard Stick

Zoom to Coordinates *

Latitude:

Longitude:

Zoom to

* Value must be in decimal degrees. Click to convert [degrees minutes seconds](#) or [UTM](#).

Text Search of map:

Search...

Category: Select...

Variety:

Male Color: Select...

Trait Package:

Acres:

Company Contact

Status: Proposed

Date Planted:

Name:

Phone:

Comments: (only seen by your org)

Pin Field

Message from webpage

Please right click on the map at the center of your radius. Click "Draw Radius" again to cancel circle drawing.

OK

Simulated Data

bing

12/10/2015 3:50:28 PM

Pop-up reminds you to right click at the center of your requested radius. Click “Draw Radius” again to cancel drawing circles.

MAPPING FUNCTIONS – DRAW RADIUS

Click on “Clear Map” to remove blue circles. Pins will be removed also, click on “Show Pins” to view pins again.

1 mile radius was selected.

Mapping Functions:

☒ Show instruction pop-ups?

Please right click on your final point to close the field

Drawing Mode **Clear Map**

Please pin in "clockwise" direction.

Show existing pins for

☒ Show only my org's pins?

Show Pins

Find Pin by # Find

Radius:

Units: ☒ Miles ☐ Kilometers

Draw Radius

Yard Stick

to Coordinates *:

Latitude:

Longitude:

Zoom to

* Value must be in decimal degrees. Click to convert [degrees minutes seconds](#) or [UTM](#).

Text Search of map:

Search...

Category:

Variety:

Male Color:

Trait Package:

Acres:

Company Contact

Name:

Phone:

Status:

Date Planted:

Pin Field

Comments: (only seen by your org)

12/10/2015 3:50:28 PM

Simulated Data

bing

© 2015 Microsoft Corporation © 2015 HERE

Right clicking on all four corners of this field drew a blue circle with a 1 mile radius each time. This shows every field within a 1 mile radius of this field.

MAPPING FUNCTIONS – YARD STICK

[Table of Contents](#)

You can measure the distance between fields in miles.

The screenshot displays a web-based mapping application. On the left, a sidebar contains various mapping functions. The 'Yard Stick' button is highlighted with a red circle and a red arrow. A red arrow also points from a text box to the 'Yard Stick' button. In the center, a map shows several yellow-outlined polygons representing fields. A pop-up message box is overlaid on the map, containing a warning icon and text. A red arrow points from a text box to the pop-up message. The top of the interface features a form with fields for 'Category', 'Variety', 'Male Color', 'Trait Package', 'Acres', 'Company Contact', 'Status', 'Name', 'Phone', 'Date Planted', and 'Comments'. The bottom of the interface shows a 'Text Search of map' section with a search bar.

Mapping Functions:

☒ Show instruction pop-ups?

Please right click on your final point to close the field

Drawing Mode OFF Clear Map

Please pin in "clockwise" direction.

Show existing pins for 2016

☐ Show only my org's pins?

Show Pins

Find Pin by #

Find

Radius:

Units: ☒ Miles ☐ Kilometers

Draw Radius

Yard Stick

Zoom to Coordinates:

Latitude:

Longitude:

Text Search of map:

Search...

Category: Select... Variety: Status: Proposed Male Color: Select... Trait Package: Acres: Pin Field

Name: Phone: Date Planted: Comments: (only seen by your org)

Message from webpage

Please right click on the points you wish to include in your distance measurement. Click "Yard Stick" again to cancel measurement taking.

OK

Simulated Data

bing

© 2015 Microsoft Corporation © 2015 HERE

Click "Yard Stick" to measure distance between fields.

Pop-up reminds you to right click on the point you wish to include in your distance. Click on "Yard Stick" again to cancel measurement taking.

MAPPING FUNCTIONS – YARD STICK

Click on “Clear Map” to remove red line. Pins will be removed also, click on “Show Pins” to view pins again.

Mapping Functions:

☒ Show instruction pop-ups?

Please right click on your final point to close the field.
Please pin in "clockwise" direction.

Category
Select...
Variety

Male Color
Select...
Trait Package

Acres

Company Contact
Name:
Phone:
Status
Proposed
Date Planted

Pin Field

Comments: (only seen by your org)

Show existing pins for 2016
☐ Show only my org's pins?
Show Pins

Find Pin by #

Radius:
Units: ☒ Miles ☐ Kilometers

1.138 miles **Yard Stick**

Zoom to Coordinates:
Latitude:

be in decimal degrees. Click to convert [degrees](#) [minutes](#) [seconds](#) or [UTM](#).

Text Search of map:

Simulated Data

12/11/2015 10:29:38 AM

2000 Feet 500 m

© 2015 Microsoft Corporation © 2015 HERE

Distance in miles is displayed here.

Red line indicates where distance was measured between.

EDITING YOUR PINS

[Table of Contents](#)

Home Certification Programs Crop Isolation Mapping Members Only Agricultural Commissioners CCIA Staff Only

View Map Your Pins

akoala@uccdavis.edu [Logout](#)

Mapping Functions:

☒ Show instruction pop-ups?

Please right click on your final point to close the field

Drawing Mode OFF Clear Map

Please pin in "clockwise" direction.

Show existing pins for 2016 ☐ Show only my org's pins?

Show Pins

Find Pin by #

Find

Radius:

Units: ☒ Miles ☐ Kilometers

Draw Radius

Yard Stick

Zoom to Coordinates *

Latitude:

Longitude:

Zoom to

* Value must be in decimal degrees. Click to convert [degrees minutes seconds](#) or [UTM](#).

Text Search of map:

Category: Variety: Male Color: Trait Package: Acres:

Company Contact: Status: Date Planted: Pin Field:

Name: Proposed

Phone:

Comments: (only seen by your org)

View Map Your Pins

12/11/2015 11:29:44 AM

Map showing locations in Idaho, including Vale, Ontario, Nysa, Emmett, Parma, Middleton, Garden City, Boise, Meridian, Nampa, Kuna, Orchard, Mountain Home, Murphy, Jordan, and Cinnabar Mountain. The map is overlaid with a purple line and a red circle around the "View Map Your Pins" button.

Click on "Your Pins" to view a list of your pins.

EDITING YOUR PINS

All pins are assigned a unique number (ID) in the order they are entered – no matter which company enters the pin. Your pin list will not have sequential numbers.

Enter pin ID to search for a specific pin.

Sort table by clicking on any of the headers.

Home Certification Programs Crop Isolation Mapping Members Only Agricultural Commissioners CCIA Staff Only

View Map Your Pins

akoala@ucdavis.edu | [Logout](#)

Find Pin: Leave blank to find all pins for given year

Show pins for: 2016 ▼

Choose which crop year you would like to see pins for.

Click "Select" to edit pin information.

| | ID | Crop | Variety | Male Color | Status | Acres | Date Planted | Date Entered |
|------------------------|-------|------|---------|------------|----------|-------|--------------|--------------|
| Select | 17764 | Corn | test | White | Proposed | 45.00 | 3/9/2016 | 11/2/2015 |
| Select | 17768 | Corn | test | N/A | Proposed | 60.00 | 4/6/2016 | 11/2/2015 |
| Select | 17767 | Corn | test | N/A | Proposed | 75.00 | 4/12/2016 | 11/2/2015 |
| Select | 17763 | Corn | test | Yellow | Planted | 50.00 | 3/7/2016 | 11/2/2015 |
| Select | 17762 | Corn | test | Yellow | Planted | 50.00 | 3/16/2016 | 11/2/2015 |
| Select | 17766 | | | l | Proposed | 25.00 | 3/9/2016 | 11/2/2015 |
| Select | 17765 | | | ite | Proposed | 50.00 | 3/14/2016 | 11/2/2015 |
| Select | 17893 | | | l | Proposed | 60.00 | 1/7/2016 | 11/16/2015 |

EDITING YOUR PINS

After selecting a pin to edit, your screen will look like this:

akoala@ucdavis.edu | [Logout](#)

Find Pin: Leave blank to
find all pins for given year

Show pins for: 2016 ▼

ID: 17767
Crop: Corn
Genus: Zea
Variety: test
Male Color: N/A ▼
Trait Package: test
Status: Proposed ▼
Acres: 75.00
Date Planted: 4/12/2016
Date Entered: 11/2/2015 2:29:19 PM
Contact Name: Ashley Koala
Contact Phone: 530-752-9828
Comments:

[View Field](#)
[Update](#) [Cancel/Clear Selection](#)

If you change the status of your pin to “inactive”, the pin will be immediately canceled and removed from the map.

If the status is changed to “inactive” prior to 6 days from initial pinning date, there will be no fee charged.

Only white boxes can be edited.

“Select” was clicked for editing this pins information.

| | ID | Crop | Variety | Male Color | Status | Acres | Date Planted | Date Entered |
|------------------------|-------|------|---------|------------|----------|-------|--------------|--------------|
| Select | 17764 | Corn | test | White | Proposed | 45.00 | 3/9/2016 | 11/2/2015 |
| Select | 17768 | Corn | test | N/A | Proposed | 60.00 | 4/6/2016 | 11/2/2015 |
| Select | 17767 | Corn | test | N/A | Proposed | 75.00 | 4/12/2016 | 11/2/2015 |
| Select | 17763 | Corn | test | Yellow | Planted | 50.00 | 3/7/2016 | 11/2/2015 |

CONTACT US

[Table of Contents](#)

For more information or assistance,
please contact:

Timothy Blank

Email: tjblank@ucdavis.edu

Phone: 530-754-4854

If Timothy is not available, call
the main office:

530-752-0544